

Monthly Report on Short-term Transactions of Electricity in India

June 2024



Economics Division
Central Electricity Regulatory Commission
6th, 7th & 8th Floors, Tower B, World Trade Centre
Nauroji Nagar, New Delhi- 110029



Contents

S.No.	Contents	Page No
	Contents	I
	List of Tables	Ii
	List of Figures	Iii
	Abbreviations	Iv
1	Introduction	1
2	Volume of Short-term Transactions of Electricity and DSM	1
3	Price of Short-term Transactions of Electricity and DSM Charges	4
3.1	<i>Price of electricity transacted through Traders</i>	4
3.2	<i>Price of electricity transacted through Power Exchanges</i>	4
3.3	<i>DSM Charges</i>	4
4	Trading Margin	5
5	Volume of Short-term Transactions of Electricity (Regional Entity-wise)	5
6	Congestion on Inter-State Transmission Corridor for Day-Ahead Market and Real-Time Market on Power Exchanges	6
7	Volume and Price of Renewable Energy Certificates (RECs)	7
8	Inferences	8

S.No.	List of Tables	Page No.
Table-1	Volume of Short-term Transactions of Electricity and DSM (All India)	11
Table-2	Percentage Share of Electricity Transacted by Trading Licensees	13
Table-3	Price of Electricity Transacted through Traders	14
Table-4	Price of Electricity Transacted through Traders (Time-wise)	14
Table-5	Price of Electricity Transacted in Day Ahead Market	14
Table-6	Price of Electricity Transacted in Green Day Ahead Market	14
Table-7	Price of Electricity Transacted in High Price Day Ahead Market	14
Table-8	Price of Electricity Transacted in Real Time Market	14
Table-9	Volume and Price of Electricity in Term Ahead Market of IEX	14
Table-10	Volume and Price of Electricity in Term Ahead Market of PXIL	14
Table-11	Volume and Price of Electricity in Term Ahead Market of HPX	15
Table-12	Volume and Price of Electricity in Green Term Ahead Market of IEX	15
Table-13	Volume and Price of Electricity in Green Term Ahead Market of PXIL	15
Table-14	Volume and Price of Electricity in Green Term Ahead Market of HPX	15
Table-15	Volume and Price of Electricity in High Price Term Ahead Market of IEX	15
Table-16	Volume and Price of Electricity in High Price Term Ahead Market of PXIL	15
Table-17	Volume and Price of Electricity in High Price Term Ahead Market of HPX	15
Table-18	Volume of Electricity Sold in Day Ahead Market through Power Exchanges	17
Table-19	Volume of Electricity Purchased in Day Ahead Market through Power Exchanges	19
Table-20	Volume of Electricity Sold in Green Day Ahead Market through Power Exchanges	20
Table-21	Volume of Electricity Purchased in Green Day Ahead Market through Power Exchanges	21
Table-22	Volume of Electricity Sold in High Price Day Ahead Market through Power Exchanges	22
Table-23	Volume of Electricity Purchased in High Price Day Ahead Market through Power Exchanges	22
Table-24	Volume of Electricity Sold in Real Time Market through Power Exchanges	23
Table-25	Volume of Electricity Purchased in Real Time Market through Power Exchanges	25
Table-26	Total Volume of Net Transactions through Power Exchanges (Regional Entity-wise)	26
Table-27	Details of Congestion in Power Exchanges	29
Table-28	Volume of Transactions through Power Exchanges (Day-wise)	30
Table-29(a)	Price of Day Ahead Transactions of Electricity (Day-Wise)	31
Table-29(b)	Price of Green Day Ahead Transactions of Electricity (Day-Wise)	32
Table-29(c)	Price of Real Time Transactions of Electricity (Day-Wise)	33
Table-29(d)	Price of High Price Day Ahead Transactions of Electricity (Day-Wise)	34
Table-30	Volume of Transactions through Power Exchanges (Regional Entity-wise)	35
Table-31	Volume and Charges under DSM (Day wise)	38
Table-32	Volume of Electricity Under drawal/ Over Injection (Exported) under DSM	39
Table-33	Volume of Electricity Over drawal/ Under Injection (Imported) under DSM	43
Table-34	Volume and Price of Renewable Energy Certificates (RECs) Transacted through Power Exchanges and through Traders (Bilateral)	47
Table-35(a)	Volume and Price of Cross Border Trade through Day Ahead Market at IEX	47
Table-35(b)	Volume and Price of Cross Border Trade through Real Time Market at IEX	47

S. No.	List of Figures	Page No.
Figure-1	Volume of various kinds of Electricity Transactions in Total Electricity Generation	11
Figure-2	Volume of Short-term Transactions of Electricity and DSM Volume	11
Figure-3	Volume transacted in different markets segments on Power Exchanges	12
Figure-4	Volume of transactions on Power Exchange and DSM Volume (Day-wise)	12
Figure-5	Percentage Share of Electricity Transacted by Trading Licensees	13
Figure-6	Weighted Average Price of Short-term Transactions of Electricity	16
Figure-7	Weighted Average Price of Short-term Transactions of Electricity (Day-wise)	16

Abbreviations

Abbreviation	Expanded Version
ABSP_ANTP	Acme Bhiwadi Solar Power Private Limited, Anantpur
ACBIL	ACB (India) Limited
ACP	Area Clearing Price
ACV	Area Clearing Volume
ACME_SLR	ACME Solar Power Project
ACME_RUMS	Acme Rewa Ultra Mega Solar Project
ADANI_4RE	Adani Renewable Energy Holding Four Limited
ADANI GREEN	Adani Green Energy Limited
ADANIHB_SLR	Adani Hybrid Energy Jaisalmer One Limited (Solar)
ADANI_SLR 4	Adani Solar Energy Four Private Limited
ADANIHB_WIND	Adani Hybrid Energy Jaisalmer One Limited (Wind)
ADEPT	Adept Renewable Technologies Private Limited
ADY1_PVGD	Adyah Solar Energy Pvt Ltd., Block 1 Pavagada Solar Park
ADY2_PVGD	Adyah Solar Energy Pvt Ltd., Block 2 Pavagada Solar Park
ADY3_PVGD	Adyah Solar Energy Pvt Ltd., Block 3 Pavagada Solar Park
ADY6_PVGD	Adyah Solar Energy Pvt Ltd., Block 6 Pavagada Solar Park
ADY10_PVGD	Adyah Solar Energy Pvt Ltd., Block 10 Pavagada Solar Park
ADY13_PVGD	Adyah Solar Energy Pvt Ltd., Block 13 Pavagada Solar Park
AGEMPL BHUJ	Adani Green Energy (MP) Ltd.,Bhuj
AHEJOL_S_FTG2	Adani Hybrid Energy Jaisalmer One Limited (SOLAR)
AHEJOL_W_FTG2	Adani Hybrid Energy Jaisalmer One Limited (WIND)
AHEJ2L_SOLAR	Adani Hybrid Energy Jaisalmer Two Limited (Solar)
AHEJ3L_SOLAR	Adani Hybrid Energy Jaisalmer Three Limited (Solar)
AHEJ4L_SOLAR	Adani Hybrid Energy Jaisalmer Four Limited-Hybrid Solar
AHEJ4L_WIND	Adani Hybrid Energy Jaisalmer Four Limited-Hybrid Wind
AHSP_ANTP	Acme Hisar Solar Power Private Limited,Anantpur
AKS_PVGD	ACME Kurukshetra Solar Energy Pvt. Ltd
AKSP_ANTP	Acme Karnal Solar Power Private Limited,Anantpur
ALFANAR_BHUJ	Alfanar Group Wind Project, Bhuj, Gujarat
ALTRA XERGI	Altra Xergi Power Private Limited
AMP_GREEN6	Amp Energy Green Six Private Limited
AMPLUS_AGES	Amplus Ages Private Limited
AMPS Hazira	Arcelor Mittal Nippon Steel, Hazira
APTEL	Appellate Tribunal for Electricity
ARERJL_SLR	Adani Renewable Energy Park Rajasthan Ltd.
ARINSUM_RUMS	Solenergi RewaUltraMega Solar Project
ARS_PVGD	ACME REWARI Solar Power Pvt Ltd.
ARTPP	Adani Power Limited - Raipur TPP
ASEJTL_SLR	Adani Solar Energy Jodhpur Two Ltd.
AVAADA1_PVGD	Avaada Solar Energy Private Ltd., Pavagada Project 1
AVAADA2_PVGD	Avaada Solar Energy Private Ltd., Pavagada Project 2
AVADARJHN_SLR	Avaada Rjhn Private Limited_Solar
AYANA_NPKUNTA	Ayana Power, NP Kunta
AZURE_ANTP	Azure Power,Anantpur
AZURE_PVGD	Azure Power,Pavagada
AZURE_SLR	Azure Power Solar Power Project
AZURE34_SLR	Azure Power 34 Pvt. Ltd. Solar Power Project
AZURE43_SLR	Azure Power Forty Three Private Limited
BALCO	Bharat Aluminum Company Limited
BARC	Bhabha Atomic Research Centre
BASOCHHU HEP	Basochhu Hydropower Plant Bhutan
BBMB	Bhakra Beas Management Board

BETAM_TCN	Betam Wind Energy Private Limited, Tuticorin
BHADRAVATHI HVDC	Bhadravathi High Voltage Direct Current Link
BRBCL	Bhartiya Rail Bijlee Company Limited
CEA	Central Electricity Authority
CERC	Central Electricity Regulatory Commission
CGPL	Coastal Gujarat Power Limited
CHUKHA HEP	Chhukha Hydroelectric Project, Bhutan
CHUZACHEN HEP	Chuzachen Hydro Electric Power Project
CLEAN_SLR	Clean Solar Power Pvt. Ltd
CLEANSPL_SLR	Clean Solar Jodhpur Pvt Ltd
COASTGEN	Coastal Energen Private Limited
DAGACHU	Dagachhu Hydro Power Corporation
DAM	Day Ahead Market
DEVKOOT_SLR	Devkoot Solar Power Plant, NTPC Green Energy Ltd.
DCPP	Donga Mahua Captive Power Plant
DD&DNH	Daman and Diu & Dadar Nagar Haveli
DGEN MEGA POWER	DGEN Mega Power Project
DGPCL Bhutan	Druk Green Power Corporation Ltd., Bhutan
DHARIWAL POWER	Dhariwal Power Station
DIKCHU HEP	Dikchu Hydro-electric Project, Sikkim
DOYANG HEP	DoyangHydro Electric Project
DSM	Deviation Settlement Mechanism
DVC	Damodar Valley Corporation
EDEN_SLR	Eden RE Cite Private limited
EMCO	EMCO Energy Limited
ESPL_RADHANESDA	Electro Solaire Private Limited, Radhanesda
ESSAR POWER	Essar Power Limited
FORTUM1_PVGD	Fortum Finnsurya Energy Private Ltd, Pavagada Project 1
FORTUM2_PVGD	Fortum Finnsurya Energy Private Ltd, Pavagada Project 2
FRV_ANTP	Fotowatio Renewable Ventures, Anantapur
FRV_NPK	Fotowatio Renewable Ventures, NP Kunta
GIPCL_RADHANESDA	Gujarat Industries Power Company Ltd, Radhanesda
GIWEL_BHUJ	Green infra wind energy Limited, Bhuj
GIWEL_TCN	Green Infra Wind Energy Limited,Tuticorin
GMR CHHATTISGARH	GMR Chhattisgarh Energy Limited
GMR KAMALANGA	GMR Kamalanga Energy Ltd.
G-DAM	Green Day Ahead Market
GRIAN	Grian Energy Private Limited
GSECL P-II	GSECL Raghnesda Solar Park (Phase-II)
G-TAM	Green Term Ahead Market
HPX	Hindustan Power Exchange Limited
HP-DAM	High Price Day Ahead Market
HP-TAM	High Price Term Ahead Market
HVDC ALPD	Alipurduar High Voltage Direct Current Link
HVDC CHAMPA	Champa-Kurukshetra High Voltage Direct Current Link
HVDC PUS	PasauliHigh Voltage Direct Current Link
HVDC RAIGARH	Raigarh-Pugalur High Voltage Direct Current Link
IBEUL	Ind Bharat Energy Utkal Limited
IEX	Indian Energy Exchange Limited
IGSTPS	Indira Gandhi Super Thermal Power Station Jhajjar
IL&FS	Infrastructure Leasing & Financial Services Limited
INOX_BHUJ	INOX Wind Limited, Bhuj, Gujarat
J&K	Jammu & Kashmir
JAYPEE NIGRIE	Jaypee Nigrie Super Thermal Power Project

JHABUA POWER MP	Jhabua Thermal Power Project
JINDAL POWER	Jindal Power Limited
JINDAL STAGE-II	Jindal Power Ltd Stage II
JITPL	Jindal India Thermal Power Ltd.
JORETHANG	Jorethang Loop Hydroelectric Power Project
JSW_RENEW_2	JSW Renew Energy Two Limited
KAPP 3&4	Kakrapar Atomic Power Station Unit 3 & 4
KARCHAM WANGTOO	Karcham Wangtoo H.E. Project
KBUNL	Kanti Bijlee Utpadan Nigam Limited
KHURJA STPP	Khurja Super Thermal Power Plant
KORBA WEST POWER	Korba West Power Company Limited
KOTESHWAR	Koteshwar Hydro Power project
KREDL_PVGD	Karnataka Renewable Energy Development Ltd,Pavagada
KSK MAHANADI	KSK Mahanadi Power Ltd
KSMPL_SLR	Kilaj Solar (Maharashtra) Private Limited
KURICHU HEP	Kurichhu Hydro-electric Power Station, Bhutan
LANKO_AMK	LancoAmarkantak Power Private Limited
LANKO BUDHIL	LancoBudhil Hydro Power Private Limited
LANKOKONDAPALLY	Lanco Kondapally Power Private Limited
LOKTAK	Loktak Power Project
MAHINDRA_RUMS	Mahindra Rewa Ultra Mega Solar Project
MAHOBA_SLR	Mahoba Solar Power Project
MALANA	Malana Hydroelectric Plant
MANGDECHU HEP	Mangdechhu Hydroelectric Project, Mangdechhu River, Bhutan
Maruti Coal	Maruti Clean Coal and Power Limited
MB POWER	MB Power Ltd
MEENAKSHI	Meenakshi Energy Private Limited
MRPL	Mahindra Renewables Private Limited
MSEPL	Masaya Solar Energy Private Limited
MSRPL	Mega Solis Renewables Pvt. Ltd.
MTPS	TATA Power Mundra Thermal Power Station
MTPS II	Muzaffarpur Thermal Power Station – Stage II
MYTRAH_TCN	Mytrah Energy (India) Private Limited,Tuticorin
MU	Million Units
NAPP	Narora Atomic Power Plant
NCR ALLAHABAD	North Central Railway, Allahabad
NEEPCO	North Eastern Electric Power Corporation Limited
NEP	Nepal
NFL	National Fertilisers Limited
NHPC STATIONS	National Hydro Electric Power Corporation Ltd. Stations
NJPC	Nathpa Jhakri Hydroelectric Power Station
NLC	Neyveli Lignite Corporation Limited
NLDC	National Load Dispatch Centre
NOKHRA_STPP	Nokhra Solar Power Plant, NTPC Green Energy Ltd.
NPGC	Nabinagar Power Generating Company (Pvt.) Limited
NREL_DAYAPAR (W)	NREL-Dayapar Wind
NSPCL	NTPC - SAIL Power Company Private Limited
NTECLVallur	NTPC Tamil Nadu Energy Company Limited Vallur
NTPC_ANTP	NTPC Anantapur
NTPC STATIONS	National Thermal Power Corporation Ltd. Stations
NTPL	NLC Tamil Nadu Power Limited
NVVN	NTPC Vidyut Vyapar Nigam Limited
OCF	Order Carry Forward
ONEVOLT	Onevolt Energy Private Limited

ONGC Platana	ONGC Tripura Power Company
OPGC	Odisha Power Generation Corporation
ORANGE_TCN	Orange Renewable Power Pvt. Ltd,Tuticorin
OSTRO	Ostro Energy Private Limited
OTC	Over The Counter
PARAM_PVGD	Parampujya Solar Energy Private Ltd
PARE HEP	Pare hydroelectric project, Arunachal Pradesh
PXIL	Power Exchange India Limited
RAMPUR HEP	Rampur Hydro Electric Power Project
RANGIT HEP	Rangit Hydroelectric power project
RANGANADI HEP	Ranganadi Hydro Electric Power Project, Arunachal Pradesh
RAP-B	Rajasthan Atomic Power Plant-B
RAP-C	Rajasthan Atomic Power Plant-C
RAPP 7&8	Rajasthan Atomic Project 7&8
REC	Renewable Energy Certificate
REGL	Raigarh Energy Generation Limited
RENEW_BHACHAU	ReNew Power Limited, Bhachau
RENEW_BHUI	ReNew Power Limited, Bhuj
RENEW_PVGD	ReNew Wind Energy (TN2) Private Limited
RENEW_ROSHNI FATEHGARH	Renew Surya Roshni Private Limited-Fatehgarh-III PS
RENEW_SAAVAN	Renew Surya Aayan Private Limited
RENEW_SLR_BKN	Renew Solar Bikaner
RENEW_SOJAS	Renew Surya Ojas Private Limited-Wind
RENEW_SPRATAP	Renew Surya Pratap Private Limited
RENEW_SR_SLR	Renew Surya Ravi Private Limited (Solar)
RENEW_SVIHAAN	Renew Surya Vihaan Private Limited
RENEW_ROSHNI	Renew Surya Roshni Private Limited Koppal PS
RENEWJH_SLR	Renew Solar Energy (Jharkhand Three) Private Limited
RENEWURJA_SLR	ReNew Solar Urja Private Limited
RGPPL_IR	Ratnagiri Gas and Power Private Ltd., supply to Indian Railways
RGPPL_OTHER	Ratnagiri Gas and Power Private Limited
RISING_SLR	Rising Sun Energy Pvt. Ltd.
RLDC	Regional Load Dispatch Centre
RONGNICHU HEP	Rongnichu Hydro Electric Power Project
RPREL	Raipur Energen Limited
RSTPS_FSPP	NTPC Ramagundam STPS- Floating Solar PV Project
RTC	Round The Clock
RTM	Real Time Market
SasanUMPP	Sasan Ultra Mega Power Project
SB_SLR	Soft Bank Solar
SB6_POKARAN	SB Energy Six Private Limited, Pokaran
SBG CLEANTECH_SLR	SBG Cleantech Ltd
SBG_NPK	SB Energy Solar Private Limited,NP Kunta
SBG_PVGD	SB Energy Solar Private Limited,Pavagada
SBSR_SLR	SBSR Power Cleantech Eleven Private Limited
SEMBCORP	Sembcorp Gayatri Power Ltd
SIMHAPURI	Simhapuri Energy Private Limited
SKS Power	SKS Power Generation Chhattisgarh Limited
SESPL	Srijan Energy Systems Pvt. Ltd.
SINGOLI BHATWARI HEP	Singoli-Bhatwari Hydroelectric Project, Uttarakhand
SKRPL	Sitac Kabini Renewables Pvt. Ltd.
SPRNG_NPKUNTA	Sprng Energy, NP Kunta
SPRING_PUGALUR	Spring Solar Power Private Limited, Pugalur
SUL	Sikkim Urja Limited

TALA HEP	Tala Hydroelectric Project, Bhutan
TASHIDENG HEP	Tashiding Hydro Electric Project, Sikkim
TATA_ANTP	TATA Power Anantapur
TATA_PVGD	Tata Power Renewable Energy Ltd
TATA_SLR	Tata Solar
TAM	Term Ahead Market
TEESTA STG3	Teesta Stage 3 Hydro Power Project
TEHRI	Tehri Hydro Electric Power Project
TESPL	Transition Energy Services Private Limited
THAR1_SLR	Thar Surya Ravi One Pvt Ltd
THERMAL POWERTECH	Thermal Powertech Corporation India Limited
TPREL_RADHANESDA	Tata Power Renewable Energy Limited, Radhanesda
TPSL	TP Saurya Limited
VINDHYACHAL HVDC	Vindhyachal High Voltage Direct Current Link
WA	Weighted Average
YARROW_PVGD	Yarrow Infra Structure Private Ltd

1. Introduction

1.1. A well-functioning electricity market requires an effective market monitoring process. The monthly report on short-term transactions of electricity, published by CERC since 2008 as part of its market monitoring process, provides a snapshot of key aspects of short-term transactions of electricity in India. Here, “short-term transactions of electricity” refers to the contracts of less than one year period for electricity transacted (inter-State) - through Trading Licensees, directly by the Distribution Licensees and on Power Exchanges (Indian Energy Exchange Ltd (IEX), Power Exchange India Ltd (PXIL) and Hindustan Power Exchange Ltd (HPX)). “DSM Volume” includes the volume recorded under Deviation Settlement Mechanism. The main objectives of the report are: (i) to analyse the volume and price of the short-term transactions of electricity; (ii) to assess the competition among the market players; (iii) to analyse the effect of congestion on the volume of electricity transacted through power exchanges; (iv) to provide information on volume and price of Renewable Energy Certificates (RECs) transacted through power exchanges; and (v) to disseminate all other relevant market information. The analysis of short-term transactions of electricity and DSM volume during the month of **June 2024** is presented in the following sections.

2. Volume of Short-term Transactions of Electricity and DSM

2.1. During June 2024, total electricity generation, excluding generation from renewable and captive power plants in India, was 139241.95 MU (Table-1). Of the total electricity generation, 16.11% was transacted through short-term and DSM, comprising of 7.80% through bilateral¹ (through Traders and Term-Ahead contracts on power exchanges, and directly between distribution companies), followed by 6.27% through power exchanges {Day Ahead Market (DAM) (including G-DAM) and Real Time Market (RTM)}, and 2.04% through DSM (Table-1 & Figure-1).

2.2. Of the total short-term transactions and DSM volume (22426.85 MU), 48.40% was transacted through bilateral (i.e. through Traders, Term-Ahead contracts on power exchanges and directly between companies), followed by 38.94% through power exchanges {DAM

¹ With change in the regime on implementation of GNA Regulations from 1st October 2023, the volume reported here is not strictly comparable to the volumes in previous months. Some discrepancies were identified by CERC in the data provided by NLDC which prompted further validation. The volume herein is computed after verification with the volumes reported by the Trading Licensees and the Power Exchanges, and are subject to further revision. The Commission has directed NLDC, vide letter dated 05.01.2024, to make necessary provisions to differentiate the type of transactions under GNA and T-GNA at the earliest. In the interim, some of the tables in the monthly reports have been temporarily discontinued.

(including G-DAM & HP-DAM) and RTM}, and 12.66% through DSM (Table-1 & Figure-2). The daily volume of power exchange transactions is shown in Table-28. Figure-4 shows the daily volume trend for power exchange transactions and DSM volume.

2.3. Of the total volume of electricity transacted through power exchanges, 46.13% of the volume was transacted in DAM (including G-DAM & HP-DAM), followed by 26.94% in Term Ahead Market (TAM) (including G-TAM & HP-TAM) and 26.93% in RTM (Figure-3).

2.4. The share of electricity traded by each trading licensee is given in Table-2 & Figure-5 shows the share of top 5 trading licensees. The volume of electricity transacted by the trading licensees includes bilateral transactions and transactions undertaken through power exchanges. There were 59 trading licensees as of June 2024. Of which, 36 trading licensees were engaged in short-term trading. The top 5 trading licensees, namely PTC India Ltd., Adani Enterprises Ltd., NTPC Vidyut Vyapar Nigam Ltd., Tata Power Trading Company (P) Ltd. and Manikaran Power Ltd., had a share of 81.77% in the total volume of electricity traded by all the licensees.

2.5. Herfindahl-Hirschman Index (HHI), a commonly accepted index to calculate market concentration, has been used to measure competition among trading licensees. An increase in the HHI generally indicates a decrease in competition and an increase in market concentration, and vice versa. The HHI below 0.15 indicates non-concentration, HHI between 0.15 and 0.25 indicates moderate concentration, and HHI above 0.25 indicates high concentration. The HHI has been computed based on the volume of electricity traded (inter-State & intra-State) by inter-State trading licensees, and it was 0.1708 for the month of June 2024, which indicates moderate concentration of market power (Table-2).

2.6. The volume of electricity transacted in the DAM of IEX was 4836.23 MU, while no electricity was transacted in the DAM of PXIL and HPX. The volume of total buy bids and sell bids was 8876.75 MU and 8904.86 MU, respectively in IEX. While the sell bids volume in PXIL and HPX was 2.67 MU and 2.67 MU respectively, no buy bids were received at PXIL and HPX both.

2.7. Of the total volume of electricity transacted in the DAM of IEX, the volume purchased by the neighbouring countries of India was 37.06 MU, while the volume sold by

the neighbouring countries was 115.31 MU, under the Cross Border Trade of electricity through power exchange (Table-35(a)). No Cross Border transaction of electricity was undertaken through PXIL and HPX.

2.8. The volume of electricity transacted in the G-DAM of IEX was 677.06 MU, while no electricity was transacted in the G-DAM of PXIL and HPX. The volume of total buy bids and sell bids was 2130.43 MU and 1340.99 MU, respectively, in IEX. No bids were received in PXIL and HPX.

2.9. The volume of electricity transacted in the HP-DAM of IEX was 0.20 MU, while no electricity was transacted in the HP-DAM of PXIL and HPX. The volume of total buy bids and sell bids was 1.09 MU and 2891.36 MU, respectively, in IEX. While the total volume of sell bids was 0.40 MU, no buy bids were received in HPX. No bids were received in PXIL.

2.10. The volume of electricity transacted in the RTM of IEX, PXIL and HPX was 3212.50 MU, 0.40 MU and 5.93 MU, respectively. The volume of total buy bids and sell bids was 5855.43 MU and 6061.22 MU, respectively in IEX, 0.75 MU and 0.62 MU in PXIL, & 8.21 MU and 6.56 MU, respectively in HPX. The variation in the volume of buy bids and sell bids placed through power exchanges shows variation in the demand and supply position.

2.11. Of the total volume of electricity transacted in the RTM of IEX, the volume sold by the neighbouring countries of India was 31.92 MU, while the volume purchased was 23.20 MU, under the Cross Border Trade of electricity through power exchange (Table-35(b)). No Cross Border transaction of electricity was undertaken through PXIL and HPX.

2.12. The volume of electricity transacted in the TAM of IEX, PXIL and HPX was 1377.79 MU, 966.28 MU and 676.10 MU, respectively (Table-9, Table-10 & Table-11). The volume of electricity transacted in the Green Term Ahead Market (G-TAM) of IEX, PXIL and HPX was 63.99 MU, 8.81 MU and 117.59 MU, respectively (Table-12, Table-13 & Table-14).

2.13. The volume of electricity transacted in the HP-TAM of IEX, PXIL and HPX was 2.05 MU, 5.70 MU and 2.03 MU, respectively (Table-15, Table-16 & Table-17).

3. Price of Short-term Transactions of Electricity and DSM charges

3.1. **Price of electricity transacted through Traders:** The minimum, maximum and weighted average sale prices for the electricity transacted through traders were ₹2.54/kWh, ₹10.00/kWh and ₹7.67/kWh, respectively (Table-3). The weighted average sale prices were also computed for the electricity transacted during Round the Clock (RTC), Peak and Off-peak periods separately, and the sale prices were ₹7.58/kWh, ₹9.63/kWh and ₹8.70/kWh, respectively (Table-4).

3.2. **Price of electricity transacted through Power Exchanges:** The minimum, maximum and weighted average prices for the electricity transacted in the DAM of IEX were ₹1.00/kWh, ₹10.00/kWh and ₹4.63/kWh, respectively (Table-5). The minimum, maximum and weighted average prices for the electricity transacted in the G-DAM of IEX were ₹1.20/kWh, ₹10.00/kWh and ₹4.06/kWh, respectively (Table-6). The minimum, maximum and weighted average prices for the electricity transacted in the HP-DAM of IEX were ₹11.26/kWh, ₹11.26/kWh and ₹11.26/kWh, respectively (Table-7). The minimum, maximum and weighted average prices for the electricity transacted in the RTM of IEX were ₹0.49/kWh, ₹10.00/kWh and ₹4.62/kWh, respectively. These prices in the RTM of PXIL were ₹10.00/kWh, ₹10.00/kWh and ₹10.00/kWh respectively. The minimum, maximum and weighted average prices for the electricity transacted in the RTM of HPX were ₹10.00/kWh, ₹10.00/kWh and ₹10.00/kWh, respectively (Table-8). The weighted average price of electricity transacted in the TAM of IEX, PXIL and HPX was ₹8.28/kWh, ₹8.11/kWh and ₹9.49/kWh, respectively (Table-9, Table-10 and Table-11). The weighted average price of electricity transacted in the G-TAM of IEX, PXIL and HPX was ₹6.22/kWh, ₹5.52/kWh and ₹5.18/kWh, respectively (Table-12, Table-13 and Table-14). The weighted average price of electricity transacted in the HP-TAM of IEX, PXIL and HPX was ₹15.00/kWh, ₹14.98/kWh and ₹14.32/kWh, respectively (Table-16 and Table-17). No electricity was transacted in DAM, G-DAM & HP-DAM of PXIL; and in DAM, G-DAM & HP-DAM of HPX.

3.3. **DSM Charges:** The minimum, maximum and average charge under DSM was ₹1.20/kWh, ₹10.16/kWh and ₹5.61/kWh, respectively (Table-31).

3.4. The comparison of weighted average prices of electricity transacted through trading licensees and power exchanges (collective transactions) is shown in Figure-6. The daily prices of electricity transacted through various segments at power exchanges and their

comparison are shown in Table-29(a), (b), (c) & (d) and Figure-7. The daily volume and charges under DSM are shown in Table-31.

4. Trading Margin

4.1. As per the CERC (Procedure, Terms and Conditions for grant of trading licence and other related matters) Regulations 2020, the trading licensees are allowed to charge a trading margin of not less than 0 paise/kWh and upto 7 paise/kWh. The weighted average trading margin charged by the trading licensees for bilateral transactions during the month was ₹0.020/kWh.

5. Volume of Short-term Transactions of Electricity (Regional Entity²-Wise)

5.1. Of the total DAM transactions at power exchanges, the top 5 regional entities/states sold 33.38% of the volume, and these were Karnataka, Chhattisgarh, Jindal Power Ltd Stage II, Himachal Pradesh and Essar Power Limited. The HHI for sellers in DAM was 0.0394, which indicates non-concentration of market (Table-18). The top 5 regional entities/states purchased 66.84% of the volume, and these were Telangana, Gujarat, Punjab, Rajasthan and Uttar Pradesh. The HHI for buyers in DAM was 0.1025, which indicates non-concentration of market (Table-19).

5.2. Of the total G-DAM transactions at power exchanges, the top 5 regional entities/states sold 40.11% of the volume, and these were Adani Renewable Energy Holding Four Ltd., Andhra Pradesh, TP Saurya Limited Banderwala, Adani Solar Energy Jodhpur Two Limited and Maharashtra. The HHI for sellers in G-DAM was 0.0636, which indicates non-concentration of market (Table-20). The top 5 regional entities/states purchased 71.99% of the volume, and these were Punjab, Maharashtra, Damodar Valley Corporation, Jharkhand and Odisha. The HHI for buyers in G-DAM was 0.1909, which indicates moderate concentration of market (Table-21).

5.3. The total volume of HP-DAM transactions at power exchanges was sold by only 1 regional entities/states and it was DGEN Mega Power Project. The HHI for sellers in HP-DAM was 1.00, which indicates high concentration of market (Table-22). The total volume of HP-DAM transactions at power exchanges was purchased by only 1 regional entities/states

² In case of a State, the entities which are “selling” also include generators connected to State Grid and the entities which are “buying” also include open access consumers.

and it was West Bengal. The HHI for buyers in HP-DAM was 1.00, which indicates high concentration of market (Table-23).

5.4. Of the total RTM transactions at power exchanges, the top 5 regional entities/states sold 34.72% of the volume, and these were Madhya Pradesh, Chhattisgarh, Karnataka, Delhi and Tamil Nadu. The HHI for sellers in RTM was 0.0417, which indicates non-concentration of market (Table-24). The top 5 regional entities/states purchased 56.43% of the volume, and these were Rajasthan, Punjab, Uttar Pradesh, Telangana and West Bengal. The HHI for buyers in RTM was 0.0844, which indicates non-concentration of market (Table-25).

5.5. The total volume of net transactions through power exchanges (Regional entity-wise), is shown in Table-26 & 30. The top 5 electricity selling regional entities/states of power exchange transactions were Karnataka, Chhattisgarh, Madhya Pradesh, Himachal Pradesh and Delhi. The top 5 electricity purchasing regional entities/states of power exchange transactions were Punjab, Telangana, Rajasthan, Gujarat and Uttar Pradesh.

5.6. Of the total under-drawal/ over-injection volume under DSM in June 2024, the top 5 regional entities/states accounted for 23.71% of the volume, and these were Haryana, Punjab, Delhi, Tamil Nadu and Maharashtra (Table-32). The top 5 regional entities/states under DSM accounted for 24.62% of the total over-drawal/ under-injection volume, and these were NTPC Stations (Northern Region), NTPC Stations (Western Region), Rajasthan, Tamil Nadu and NTPC Stations (Eastern Region) (Table-33).

6. Congestion³ on Inter-State Transmission Corridor for Day-Ahead Market and Real Time Market on Power Exchanges

6.1. Power exchanges use a price discovery mechanism in which the aggregate demand and supply are matched to arrive at an unconstrained market price and volume. This process assumes that there is no congestion in the inter-State transmission system between different regions. However, in reality, the system operator (NLDC), in coordination with RLDCs,

³ “Congestion” means a situation where the demand for transmission capacity exceeds the available transfer capability

limits the flow (due to congestion) in the inter-State transmission system. In such a situation, power exchanges adopt a mechanism called “Market Splitting”⁴.

6.2. The volume of electricity that could not be cleared due to congestion & other reasons and could not be transacted through power exchanges is the difference between unconstrained cleared volume and actual cleared volume. During the month of June 2024, congestion was experienced in DAM, G-DAM & RTM of IEX and RTM of HPX.

6.3. The volume of electricity that could not be cleared due to congestion in DAM, G-DAM & RTM of IEX was 3.18%, 3.34% and 3.56% of the unconstrained cleared volume, respectively. The volume of electricity that could not be cleared due to congestion in RTM of HPX was 9.53% of the unconstrained cleared volume. In terms of time, congestion occurred was 14.93% in DAM, 6.67% in G-DAM, 16.77% in RTM of IEX and 0.49% in RTM of HPX during the month. (Table-27).

7. Volume and Price of Renewable Energy Certificates (RECs)

7.1. The concept of Renewable Energy Certificates (RECs) seeks to address the mismatch between the availability of renewable energy and the requirement of the obligated entities to meet their renewable purchase obligation by purchasing green attributes of renewable energy remotely located in the form of RECs. The REC mechanism is a market-based instrument to promote renewable sources of energy and the development of the electricity market.

7.2. One REC is equivalent to 1 MWh electricity injected into the grid from renewable energy sources. The REC is exchanged only in the power exchanges approved by CERC within the band of a floor price and forbearance (ceiling) price as notified by CERC from time to time. The first REC trading was held on power exchanges in May 2011.

⁴“Market Splitting” is a mechanism adopted by Power Exchanges, where the market is split in the event of transmission congestion, into predetermined (by NLDC) bid areas or zones, which are cleared individually at their respective area prices such that the energy balance in every bid area is reached based upon the demand and supply in individual bid areas and using the available transmission corridor capacity between various bid areas simultaneously. As a result of this market splitting the price of electricity in the importing region, where demand for electricity is more than supply, becomes relatively higher than the price of electricity in the exporting region.

7.3. The categorisation of RECs has been dispensed with on introduction of the concept of multiplier under the CERC (Terms and Conditions for Renewable Energy Certificates for Renewable Energy Generation) Regulations, 2022, brought into effect from 05.12.2022. Accordingly, the power exchanges deactivated the Solar and Non-Solar REC contract for trading w.e.f. December 2022. A new contract named “REC” has been made available for trading on the power exchanges. Further, RECs can also be exchanged through trading licensees as per the REC Regulations 2022.

7.4. The details of REC transactions for the month of June 2024 are shown in Table-34. The market clearing volume of RECs transacted on IEX and PXIL was 439256 and 250229, respectively. The weighted average market clearing price of these RECs was ₹142/MWh in IEX and ₹147/MWh in PXIL. No RECs were traded on HPX.

7.5. The gap between the volume of buy and sell bids of RECs placed through power exchanges shows the variation in demand for the RECs. The ratio of buy bids to sell bids was 0.10 and 0.06 in IEX and PXIL, respectively. No buy bids were received on HPX.

7.6. The volume of RECs transacted through Trading Licensees in June 2024 was 5174. The weighted average trade price for the RECs transacted through traders was ₹168/MWh.

8. Inferences:

- a) The percentage of short-term transactions of electricity and DSM volume to total electricity generation was 16.11%.
- b) Of the total short-term transactions and DSM volume (22426.85 MU), 48.40% was transacted through bilateral (i.e. through Traders, Term-Ahead contracts on power exchanges and directly between companies), followed by 38.94% through power exchanges {DAM (including G-DAM & HP-DAM) and RTM}, and 12.66% through DSM.
- c) Of the total volume of electricity transacted through power exchanges, 46.13% of the volume was transacted in DAM (including G-DAM & HP-DAM), followed by 26.94% in Term Ahead Market (TAM) (including G-TAM & HP-TAM) and 26.93% in RTM

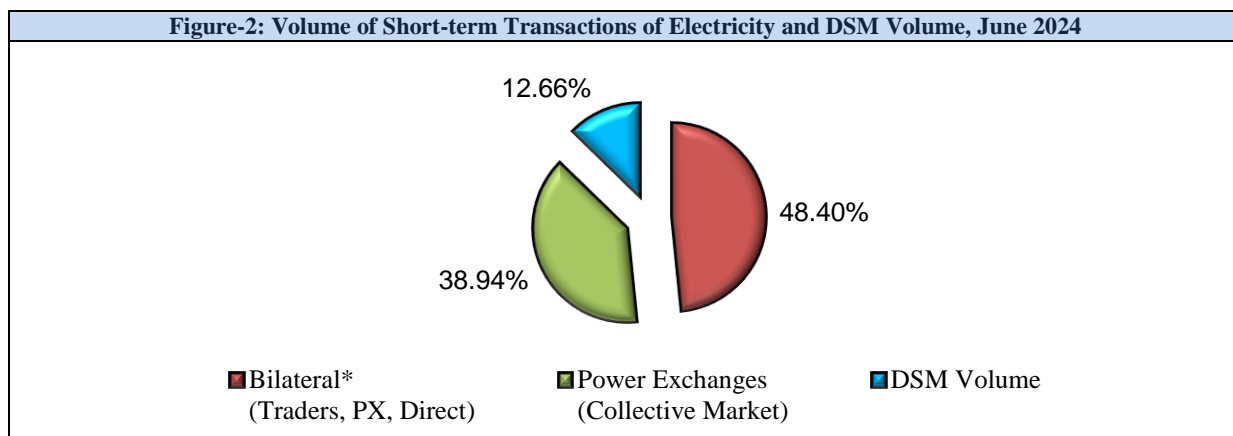
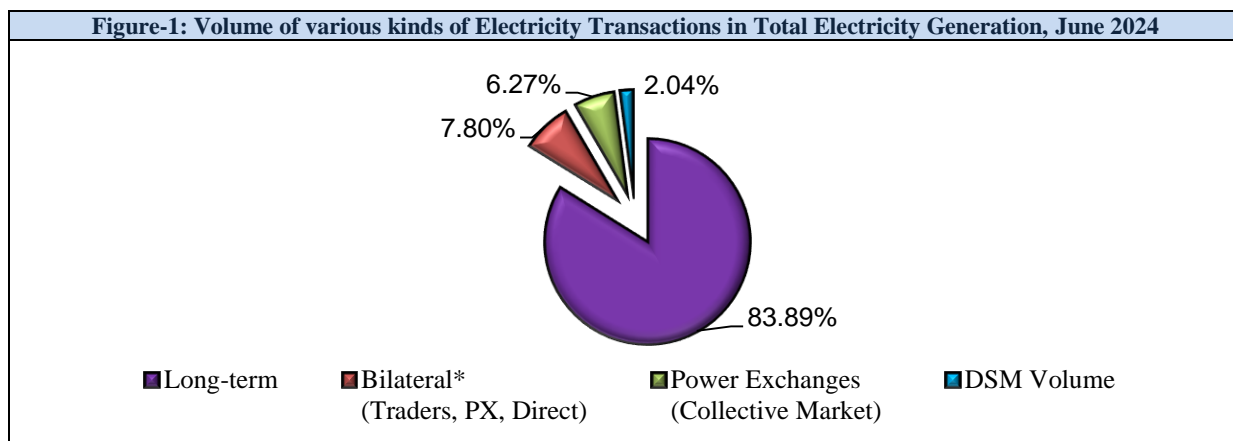
- d) The top 5 trading licensees had a share of 81.77% in the total volume traded by all the trading licensees.
- e) The Herfindahl Hirschman Index computed for the volume of electricity traded by trading licensees was 0.1708, indicating moderate concentration of market power.
- f) The weighted average sale price of electricity transacted through trading licensees was ₹7.67/kWh.
- g) The weighted average price of electricity transacted in DAM of IEX was ₹4.63/kWh, while no electricity was transacted in DAM of PXIL and HPX. The weighted average price of electricity transacted in G-DAM of IEX was ₹4.06/kWh, while no electricity was transacted in G-DAM of PXIL and HPX. The weighted average price of electricity transacted in HP-DAM of IEX was ₹11.26/kWh, while no electricity was transacted in HP-DAM of PXIL and HPX. The weighted average price of electricity transacted in RTM of IEX, PXIL and HPX was ₹4.62/kWh, ₹10.00/kWh and ₹10.00/kWh, respectively.
- h) The weighted average price of electricity transacted in TAM of IEX, PXIL and HPX was ₹8.28/kWh, ₹8.11/kWh and ₹9.49/kWh, respectively. The weighted average price of electricity transacted in G-TAM of IEX, PXIL and HPX was ₹6.22/kWh, ₹5.52/kWh and ₹5.18/kWh, respectively. The weighted average price of electricity transacted in HP-TAM of IEX, PXIL and HPX was ₹15.00/kWh, ₹14.98/kWh and ₹14.32/kWh, respectively.
- i) The average charge under DSM was ₹5.61/kWh.
- j) The weighted average trading margin charged by the trading licensees for bilateral transactions was ₹0.020/kWh.
- k) The top 5 electricity selling regional entities/states of power exchange transactions were Karnataka, Chhattisgarh, Madhya Pradesh, Himachal Pradesh and Delhi. The top 5 electricity purchasing regional entities/states of power exchange transactions were Punjab, Telangana, Rajasthan, Gujarat and Uttar Pradesh.
- l) The top 5 under-drawing/ over-injecting regional entities/states under DSM were Haryana, Punjab, Delhi, Tamil Nadu and Maharashtra. The top 5 over-drawing/ under-

injecting regional entities/states under DSM were NTPC Stations (Northern Region), NTPC Stations (Western Region), Rajasthan, Tamil Nadu and NTPC Stations (Eastern Region).

- m) During the month of June 2024, congestion was experienced in DAM, G-DAM & RTM of IEX and RTM of HPX. The volume of electricity that could not be cleared due to congestion in DAM, G-DAM & RTM of IEX was 3.18%, 3.34% and 3.56% of the unconstrained cleared volume, respectively and in RTM of HPX it was 9.53% of the unconstrained cleared volume.
- n) The market clearing volume of RECs transacted on IEX and PXIL was 439256 and 250229, respectively. The weighted average market clearing price of these RECs was ₹142/MWh in IEX and ₹147/MWh in PXIL. No RECs were traded on HPX. The volume of RECs transacted through Trading Licensees in June 2024 was 5174. The weighted average trade price for the RECs transacted through traders was ₹168/MWh.

Table-1: VOLUME OF SHORT-TERM TRANSACTIONS OF ELECTRICITY AND DSM (ALL INDIA), JUNE 2024				
Sr. No	Transaction	Volume (MU)	% to short-term transactions and DSM Volume	% to Total Generation
A	Short-term transactions			
1	Bilateral* (Traders, PX, Direct)	10855.03	48.40	7.80
2	Power Exchanges (Collective Market)	8732.33	38.94	6.27
	(i) IEX			
	(a) DAM	4836.23	21.56	3.47
	(b) RTM	3212.50	14.32	2.31
	(c) GDAM	677.06	3.02	0.49
	(d) HP-DAM	0.20	0.001	0.0001
	(ii) PXIL			
	(a) DAM	0.00	0.00	0.00
	(b) RTM	0.40	0.002	0.0003
	(c) GDAM	0.00	0.00	0.00
	(d) HP-DAM	0.00	0.00	0.00
	(ii) HPX			
	(a) DAM	0.00	0.00	0.00
	(b) RTM	5.93	0.03	0.004
	(c) GDAM	0.00	0.00	0.00
	(d) HP-DAM	0.00	0.00	0.00
B	Through DSM	2839.49	12.66	2.04
Total Short-term transactions and DSM		22426.85	-	16.11
Total Generation		139241.95	-	-

Source: NLDC



* With change in the regime on implementation of GNA Regulations from 1st October 2023, the volume reported here is not strictly comparable to the volumes in previous months. Some discrepancies were identified by CERC in the data provided by NLDC which prompted further validation. The volume herein is computed after verification with the volumes reported by the Trading Licensees and the Power Exchanges, and may be subject to further revision. The Commission has directed NLDC, vide letter dated 05.01.2024, to make necessary provisions to differentiate the type of transactions under GNA and T-GNA at the earliest.

Figure-3: Volume transacted in different markets segments on Power Exchanges, June 2024

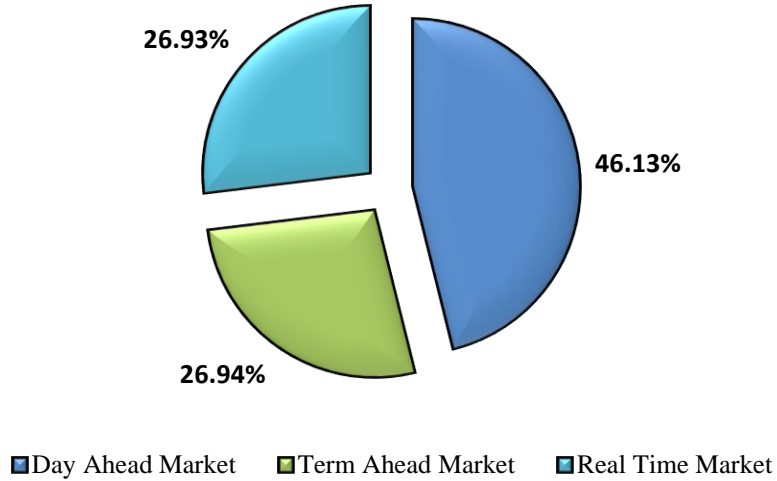


Figure-4: Volume of Transactions on Power Exchanges and DSM Volume, June 2024 (Day-wise)

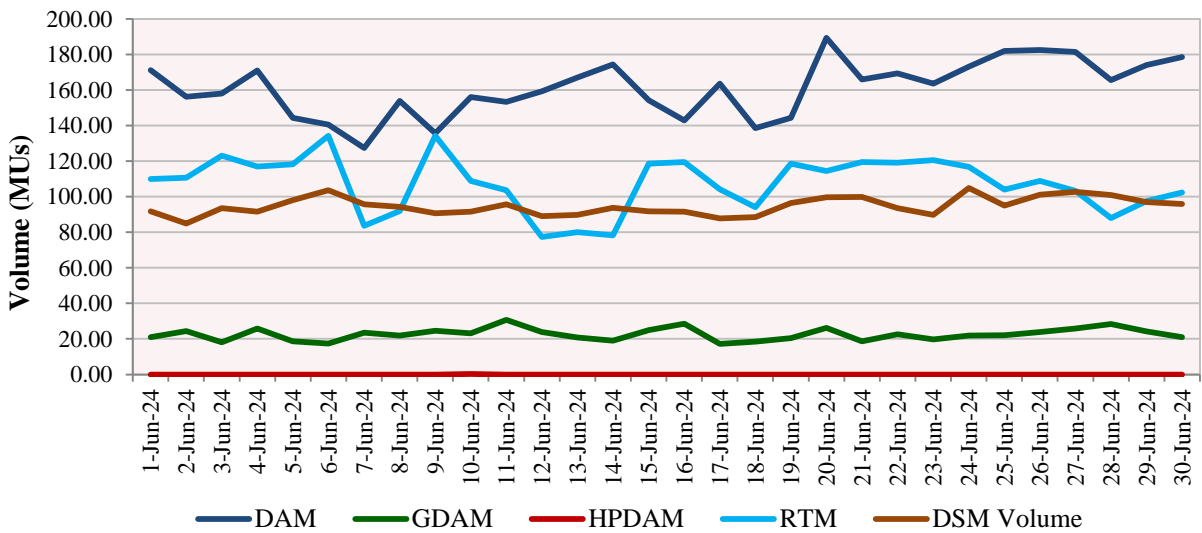


Table-2: PERCENTAGE SHARE OF ELECTRICITY TRANSACTED BY TRADING LICENSEES, JUNE 2024		
Sr. No	Name of the Trading Licensee	% Share in total Volume traded by Trading Licensees
1	PTC India Ltd.	30.98
2	Adani Enterprises Ltd.	16.81
3	NTPC Vidyut Vyapar Nigam Ltd.	15.02
4	Tata Power Trading Company (P) Ltd.	11.91
5	Manikaran Power Ltd.	7.05
6	Arunachal Pradesh Power Corporation (P) Ltd	5.54
7	GMR Energy Trading Ltd.	2.90
8	JSW Power Trading Company Ltd	2.16
9	Instinct Infra & Power Ltd.	1.14
10	Ambitious Power Trading Company Ltd.	0.92
11	Statkraft Markets Pvt. Ltd.	0.80
12	Greenko Energies Pvt Ltd	0.75
13	Kreate Energy (I) Pvt. Ltd.	0.69
14	RPG Power Trading Company Ltd.	0.58
15	Shree Cement Ltd.	0.53
16	Adarsh Stainless Pvt. Ltd.	0.38
17	Kundan International Pvt. Ltd.	0.32
18	Saranyu Power Trading Private Limited	0.28
19	Ideal Energy Solution Pvt. Ltd.	0.18
20	Powerfull Energy Trading Pvt. Ltd.	0.16
21	Abja Power Private Limited	0.14
22	Energedge Power Trading Pvt. Ltd.	0.13
23	Altilium Energie Private Limited	0.11
24	NLC India Ltd.	0.10
25	SJVN Ltd.	0.08
26	Shubheksha Advisors Pvt. Ltd.	0.08
27	Instant Ventures Pvt. Ltd.	0.07
28	Elsa Consultancy	0.06
29	Gita Power & Infrastructure Private Limited	0.04
30	Customized Energy Solutions India (P) Ltd.	0.03
31	Refex Industries Ltd.	0.02
32	REL Power Trading LLP	0.02
33	Phillip Commodities India (P) Ltd.	0.01
34	NEFA Power Trading Pvt. Ltd.	0.01
35	Shell Energy Marketing and Trading India Pvt. Ltd.	0.002
36	Renesis Solar Pvt. Ltd.	0.002
TOTAL		100.00%
Top 5 trading licensees		81.77%
Herfindahl-Hirschman Index (HHI)		0.1708
<i>Note 1: Volume of electricity transacted by the trading licensees includes bilateral transactions (inter-state & intra-state) and the transactions undertaken through power exchanges.</i>		
<i>Source: Information submitted by trading licensees</i>		

Figure 5: Percentage Share of Electricity Transacted by Trading Licensees, June 2024

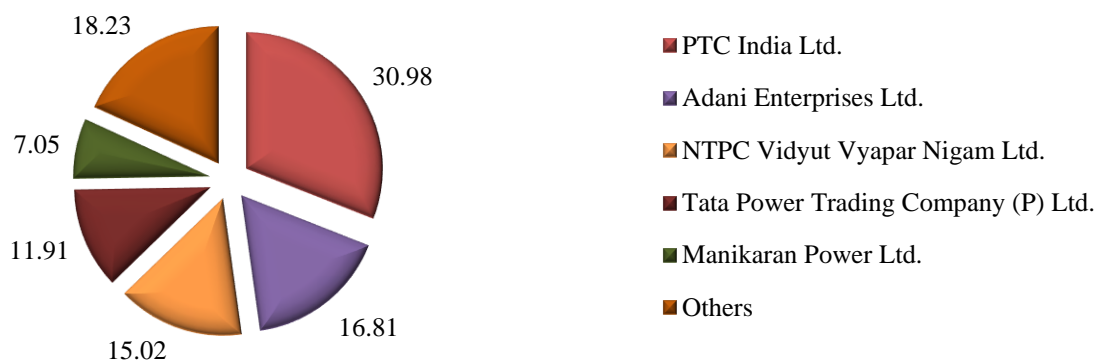


Table-3: PRICE OF ELECTRICITY TRANSACTED THROUGH TRADERS, JUNE 2024

Sr.No	Item	Sale Price of Traders (₹/kWh)
1	Minimum	2.54
2	Maximum	10.00
3	Weighted Average	7.67

Source: Information submitted by trading licensees

Table-4: PRICE OF ELECTRICITY TRANSACTED THROUGH TRADERS (TIME-WISE), JUNE 2024

Sr.No	Period of Trade	Sale Price of Traders (₹/kWh)
1	RTC	7.58
2	PEAK	9.63
3	OFF PEAK	8.70

Source: Information submitted by trading licensees

Table-5: PRICE OF ELECTRICITY TRANSACTED IN DAY AHEAD MARKET, JUNE 2024

Sr.No	ACP	Price in IEX (₹/kWh)	Price in PXIL (₹/kWh)	Price in HPX (₹/kWh)
1	Minimum	1.00	-	-
2	Maximum	10.00	-	-
3	Weighted Average	4.63	-	-

Source: IEX, PXIL and HPX

Table-6: PRICE OF ELECTRICITY TRANSACTED IN GREEN DAY AHEAD MARKET, JUNE 2024

Sr.No	ACP	Price in IEX (₹/kWh)	Price in PXIL (₹/kWh)	Price in HPX (₹/kWh)
1	Minimum	1.20	-	-
2	Maximum	10.00	-	-
3	Weighted Average	4.06	-	-

Source: IEX, PXIL and HPX

Table-7: PRICE OF ELECTRICITY TRANSACTED IN HIGH PRICE DAY AHEAD MARKET, JUNE 2024

Sr.No	ACP	Price in IEX (₹/kWh)	Price in PXIL (₹/kWh)	Price in HPX (₹/kWh)
1	Minimum	11.26	-	-
2	Maximum	11.26	-	-
3	Weighted Average	11.26	-	-

Source: IEX, PXIL and HPX

Table-8: PRICE OF ELECTRICITY TRANSACTED IN REAL TIME MARKET, JUNE 2024

Sr.No	ACP	Price in IEX (₹/kWh)	Price in PXIL (₹/kWh)	Price in HPX (₹/kWh)
1	Minimum	0.49	10.00	10.00
2	Maximum	10.00	10.00	10.00
3	Weighted Average	4.62	10.00	10.00

Source: IEX, PXIL and HPX

Table-9: VOLUME AND PRICE OF ELECTRICITY IN TERM AHEAD MARKET OF IEX, JUNE 2024

Sr.No	Term ahead contracts	Actual Scheduled Volume (MU)	Weighted Average Price (₹/kWh)
1	Intra-Day Contracts	25.89	9.93
2	Day Ahead Contingency Contracts	296.92	8.75
3	Daily Contracts	389.62	8.30
4	Monthly Contracts	348.68	7.46
5	Any Day Single Sided Contracts	316.67	8.57
	Total	1377.79	8.28

Source: IEX

Table-10: VOLUME AND PRICE OF ELECTRICITY IN TERM AHEAD MARKET OF PXIL, JUNE 2024

Sr.No	Term ahead contracts	Actual Scheduled Volume (MU)	Weighted Average Price (₹/kWh)
1	Intra-Day Contracts	36.36	9.85
2	Day Ahead Contingency Contracts	365.05	8.39
3	Daily Contracts	310.86	8.00
4	Monthly Contracts	197.70	6.93
5	Any Day Single Sided Contracts	56.31	9.95
	Total	966.28	8.11

Source: PXIL

Table-11: VOLUME AND PRICE OF ELECTRICITY IN TERM AHEAD MARKET OF HPX, JUNE 2024

Sr.No	Term ahead contracts	Actual Scheduled Volume (MU)	Weighted Average Price (₹/kWh)
1	Intra-Day Contracts	13.57	10.00
2	Day Ahead Contingency Contracts	265.71	9.77
3	Daily Contracts	196.78	9.91
4	Monthly Contracts	86.39	6.94
5	Any Day Single Sided Contracts	113.65	9.95
	Total	676.10	9.49

Source: HPX

Table-12: VOLUME AND PRICE OF ELECTRICITY IN GREEN TAM OF IEX, JUNE 2024

Sr. No	Green Term ahead contracts	Actual Scheduled Volume (MU)	Weighted Average Price (₹/kWh)
1	Day Ahead Contingency Contracts	43.11	5.62
2	Daily Contracts	5.76	6.63
3	Monthly Contracts	15.12	7.78
	Total	63.99	6.22

Source: IEX

Table-13: VOLUME AND PRICE OF ELECTRICITY IN GREEN TAM OF PXIL, JUNE 2024

Sr. No	Green Term ahead contracts	Actual Scheduled Volume (MU)	Weighted Average Price (₹/kWh)
1	Day Ahead Contingency Contracts	8.81	5.52
	Total	8.81	5.52

Source: PXIL

Table-14: VOLUME AND PRICE OF ELECTRICITY IN GREEN TAM OF HPX, JUNE 2024

Sr. No	Green Term ahead contracts	Actual Scheduled Volume (MU)	Weighted Average Price (₹/kWh)
1	Day Ahead Contingency Contracts	84.60	4.34
2	Daily Contracts	10.80	10.00
3	Any Day Single Sided Contracts	22.19	6.03
	Total	117.59	5.18

Source: HPX

Table-15: VOLUME AND PRICE OF ELECTRICITY IN HIGH PRICE TAM OF IEX, JUNE 2024

Sr. No	High Price Term ahead contracts	Actual Scheduled Volume (MU)	Weighted Average Price (₹/kWh)
1	Intra-Day Contracts	1.22	15.00
2	Day Ahead Contingency Contracts	0.83	15.00
	Total	2.05	15.00

Source: IEX

Table-16: VOLUME AND PRICE OF ELECTRICITY IN HIGH PRICE TAM OF PXIL, JUNE 2024

Sr. No	High Price Term ahead contracts	Actual Scheduled Volume (MU)	Weighted Average Price (₹/kWh)
1	Intra-Day Contracts	5.35	14.98
2	Day Ahead Contingency Contracts	0.35	15.00
	Total	5.70	14.98

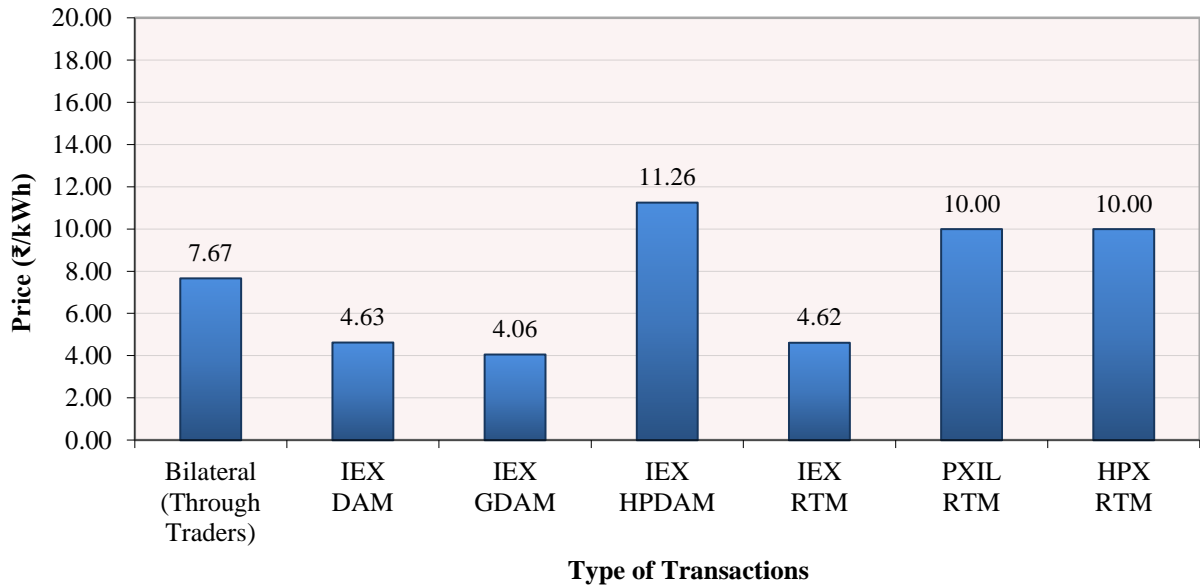
Source: PXIL

Table-17: VOLUME AND PRICE OF ELECTRICITY IN HIGH PRICE TAM OF HPX, JUNE 2024

Sr. No	High Price Term ahead contracts	Actual Scheduled Volume (MU)	Weighted Average Price (₹/kWh)
1	Intra-Day Contracts	1.83	14.30
2	Day Ahead Contingency Contracts	0.20	14.50
	Total	2.03	14.32

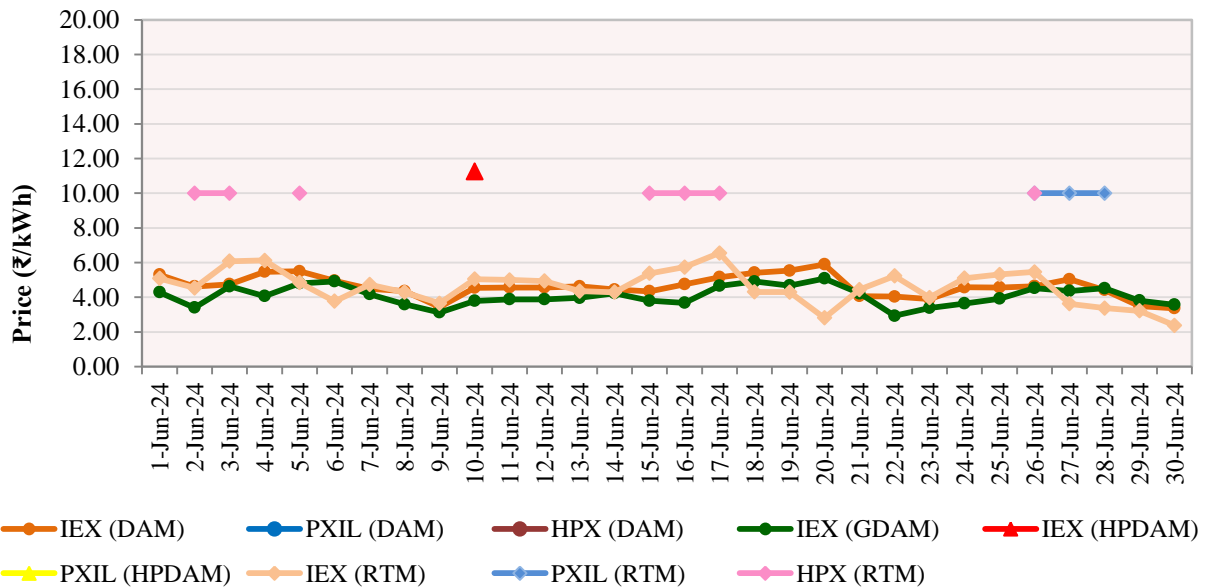
Source: HPX

Figure-6: Weighted Average Price of Short-term Transactions of Electricity, June 2024



Note: No electricity was transacted in DAM of PXIL & HPX, G-DAM of PXIL & HPX, and in HP-DAM of PXIL & HPX during June 2024

Figure-7: Weighted Average Price of Short-term Transactions of Electricity, June 2024 (Day-wise)



Note: No electricity was transacted in DAM of PXIL & HPX, G-DAM of PXIL & HPX, and in HP-DAM of PXIL & HPX during June 2024

Table-18: VOLUME OF ELECTRICITY SOLD IN DAY AHEAD MARKET THROUGH POWER EXCHANGES, JUNE 2024

Name of the Entity	Volume of Sale (MUs)	% of Volume
KARNATAKA	621.95	12.86
CHHATTISGARH	291.22	6.02
JINDAL STAGE-II	246.00	5.09
HIMACHAL PRADESH	231.58	4.79
ESSAR POWER	223.60	4.62
JAYPEE NIGRIE	217.90	4.51
ARTPP	205.61	4.25
DELHI	185.71	3.84
RAIGARH_ADANI	147.44	3.05
ASSAM	124.71	2.58
JINDAL POWER	122.97	2.54
NEPAL(NVVN)	98.09	2.03
MAHARASHTRA	95.24	1.97
DB POWER	90.85	1.88
JITPL	82.46	1.71
AD HYDRO	76.83	1.59
NTPC STATIONS-ER	74.90	1.55
GUJARAT	74.58	1.54
SEMBCORP	62.68	1.30
KARCHAM WANGTOO	60.53	1.25
MP	58.87	1.22
ADANI_WIND	58.23	1.20
ANDHRA PRADESH	53.60	1.11
DCPP	49.75	1.03
MEGHALAYA	49.10	1.02
RAJASTHAN	47.56	0.98
RENEW_SPRATAP	46.25	0.96
ADANI_S_RJ2	45.28	0.94
ADANI_4RE	44.32	0.92
ODISHA	43.89	0.91
RENEW_SR_SLR	43.50	0.90
ASEJTL_SLR	40.67	0.84
SHREE CEMENT	40.61	0.84
UTTAR PRADESH	40.26	0.83
RKM POWER	39.42	0.82
ACBIL	38.48	0.80
ADANI GREEN_25B (INFIRM)	37.33	0.77
RENEW_SOJAS	35.92	0.74
KERALA	33.89	0.70
TELANGANA	32.91	0.68
TAMIL NADU	32.35	0.67
SAINJ HEP	31.55	0.65
ADEPT	30.70	0.63
WEST BENGAL	29.88	0.62
JHABUA POWER_MP	27.30	0.56
COASTGEN	27.30	0.56
DEVKOOT_SLR	26.01	0.54
HARYANA	25.02	0.52
GOA	22.36	0.46
DVC	20.53	0.42
NPGC	20.31	0.42
ONEVOLT	18.71	0.39
DGEN MEGA POWER	18.10	0.37
RENEW_ROSHNI FATEHGARH	16.91	0.35

SORANG HEP	14.30	0.30
SIMHAPURI	12.56	0.26
PONDICHERRY	12.42	0.26
NTPC STATIONS-NR	11.98	0.25
SKS POWER	11.77	0.24
SINGOLI BHATWARI HEP	11.64	0.24
KBUNL	11.60	0.24
MIZORAM	11.33	0.23
BASOCHHU HEP	11.18	0.23
REENERGY5_WIND	10.86	0.22
NTPC STATIONS-SR	10.58	0.22
OSTRO Hiriyur	10.47	0.22
BRBCL,NABINAGAR	10.40	0.22
BALCO	10.32	0.21
ADANIRE_55 (INFIRM)	9.65	0.20
IBEUL	8.11	0.17
J & K	7.43	0.15
MARUTI COAL	7.12	0.15
LANCO BUDHIL	6.80	0.14
IL&FS	6.51	0.13
NTPC STATIONS-NER	6.34	0.13
ADANI GREEN_26B (INFIRM)	5.72	0.12
AYANA_RP3	5.65	0.12
EMCO	5.05	0.10
TPSL BANDERWALA	4.64	0.10
DHARIWAL POWER	4.47	0.09
ADANI_W_KUTCHH4 (INFIRM)	3.46	0.07
CHANDIGARH	3.34	0.07
NIKACHHU HEP	3.31	0.07
NTPC STATIONS-WR	3.13	0.06
NEP	2.74	0.06
TESPL	2.65	0.05
IGSTPS	2.53	0.05
SIKKIM	2.38	0.05
ONGC PALATANA	2.01	0.04
GMR KAMALANGA	1.98	0.04
ADANI GREEN_25A (INFIRM)	1.83	0.04
NAGALAND	1.38	0.03
GRIAN	1.26	0.03
NEEPCO STATIONS	0.90	0.02
BIHAR	0.88	0.02
MTPS	0.76	0.02
NLC	0.50	0.01
NETCL VALLUR	0.21	0.004
ADANI GREEN_26A (INFIRM)	0.19	0.004
UTTARAKHAND	0.16	0.003
NANI VIRANI_W	0.03	0.001
Total	4836.23	100.00
Volume sold by top 5 Regional Entities	1614.35	33.38
Herfindahl-Hirschman Index		0.0394

Table-19: VOLUME OF ELECTRICITY PURCHASED IN DAY AHEAD MARKET THROUGH POWER EXCHANGES, JUNE 2024

Name of the Entity	Volume of Purchase (MUs)	% of Volume
TELANGANA	846.52	17.50
GUJARAT	704.42	14.57
PUNJAB	625.63	12.94
RAJASTHAN	592.22	12.25
UTTAR PRADESH	463.93	9.59
WEST BENGAL	224.57	4.64
UTTARAKHAND	196.17	4.06
HARYANA	184.10	3.81
TAMIL NADU	151.87	3.14
MAHARASHTRA	150.87	3.12
DD&DNH	143.45	2.97
ANDHRA PRADESH	134.19	2.77
ODISHA	104.82	2.17
BIHAR	50.15	1.04
DELHI	35.49	0.73
MP	34.63	0.72
NEA-Bihar	24.93	0.52
KARNATAKA	24.52	0.51
CHANDIGARH	23.45	0.48
KERALA	18.39	0.38
NCR ALLAHABAD	13.97	0.29
NEP	12.13	0.25
AMPS Hazira	10.51	0.22
GOA	10.38	0.21
JHABUA POWER_MP	10.27	0.21
DVC	8.06	0.17
JHARKHAND	7.99	0.17
SIKKIM	5.55	0.11
TRIPURA	5.03	0.10
NAGALAND	3.41	0.07
MB POWER	2.84	0.06
ASSAM	2.69	0.06
J & K	1.85	0.04
HIMACHAL PRADESH	1.53	0.03
SKS POWER	1.43	0.03
JINDAL POWER	1.37	0.03
CHHATTISGARH	1.22	0.03
MEGHALAYA	0.99	0.02
BALCO	0.48	0.01
PONDICHERY	0.20	0.004
TOTAL	4836.23	100.00
Volume purchased by top 5 Regional Entities	3232.73	66.84
Herfindahl-Hirschman Index		0.1025

Table-20: VOLUME OF ELECTRICITY SOLD IN GREEN DAY AHEAD MARKET THROUGH POWER EXCHANGES, JUNE 2024

Name of the Entity	Volume of Sale (MUs)	% of Volume
ADANI_4RE	124.71	18.42
ANDHRA PRADESH	54.60	8.06
TPSL BANDERWALA	31.88	4.71
ASEJTL_SLR	30.62	4.52
MAHARASHTRA	29.75	4.39
ADANI GREEN_25B (INFIRM)	29.26	4.32
RENEW_SOJAS	29.16	4.31
AYANA_RP3	29.04	4.29
KARNATAKA	29.02	4.29
HIMACHAL PRADESH	27.56	4.07
MP	27.21	4.02
UTTAR PRADESH	22.97	3.39
UTTARAKHAND	19.49	2.88
RISING_SLR	18.03	2.66
ADANI_WIND	14.29	2.11
ADANI_S_RJ2	12.33	1.82
AMPLUS_AGES	11.98	1.77
TESPL	11.56	1.71
OSTRO Hiriyur	11.36	1.68
WEST BENGAL	11.04	1.63
CONTINNUM PT	10.59	1.56
ADANIRE_55 (INFIRM)	9.48	1.40
RENEW_ROSHNI FATEHGARH	9.31	1.37
SIKKIM	9.26	1.37
RENEW_SR_SLR	8.39	1.24
J & K	8.32	1.23
SINGOLI BHATWARI HEP	7.57	1.12
RAJASTHAN	7.03	1.04
ADANI GREEN_26B (INFIRM)	6.13	0.91
ADANI_W_KUTCHH4 (INFIRM)	6.08	0.90
JSW_RENEW_2	5.16	0.76
NANI VIRANI_W	4.82	0.71
NTPC STATIONS-SR	3.13	0.46
ADANI GREEN_25A (INFIRM)	2.69	0.40
RENERGY5_WIND	2.38	0.35
DELHI	0.59	0.09
ADANI GREEN_26A (INFIRM)	0.28	0.04
Total	677.06	100.00
Volume sold by top 5 Regional Entities	271.56	40.11
Herfindahl-Hirschman Index		0.0636

Table-21: VOLUME OF ELECTRICITY PURCHASED IN GREEN DAY AHEAD MARKET THROUGH POWER EXCHANGES, JUNE 2024

Name of the Entity	Volume of Purchase (MUs)	% of Volume
PUNJAB	265.26	39.18
MAHARASHTRA	77.39	11.43
DVC	49.79	7.35
JHARKHAND	48.41	7.15
ODISHA	46.59	6.88
AMPS Hazira	39.24	5.80
TAMIL NADU	27.53	4.07
UTTAR PRADESH	22.39	3.31
KARNATAKA	20.63	3.05
NCR ALLAHABAD	19.51	2.88
GUJARAT	14.96	2.21
HARYANA	10.05	1.48
DELHI	9.58	1.42
ANDHRA PRADESH	8.01	1.18
TELANGANA	6.29	0.93
KERALA	6.01	0.89
MP	3.40	0.50
BALCO	1.39	0.21
SIKKIM	0.37	0.05
CHHATTISGARH	0.22	0.03
HIMACHAL PRADESH	0.04	0.01
MEGHALAYA	0.01	0.001
TOTAL	677.06	100.00
Volume purchased by top 5 Regional Entities	487.44	71.99
Herfindahl-Hirschman Index		0.1909

Table-22: VOLUME OF ELECTRICITY SOLD IN HIGH PRICE DAY AHEAD MARKET THROUGH POWER EXCHANGES, JUNE 2024

Name of the Entity	Volume of Sale (MUs)	% of Volume
DGEN MEGA POWER	0.20	100.00
TOTAL	0.20	100.00
Volume sold by top 5 Regional Entities	0.20	100.00
Herfindahl-Hirschman Index		1.0000

Table-23: VOLUME OF ELECTRICITY PURCHASED IN HIGH PRICE DAY AHEAD MARKET THROUGH POWER EXCHANGES, JUNE 2024

Name of the Entity	Volume of Purchase (MUs)	% of Volume
WEST BENGAL	0.20	100.00
TOTAL	0.20	100.00
Volume purchased by top 5 Regional Entities	0.20	100.00
Herfindahl-Hirschman Index		1.0000

Table-24: VOLUME OF ELECTRICITY SOLD IN REAL TIME MARKET THROUGH POWER EXCHANGES, JUNE 2024

Name of the Entity	Volume of Sale (MUs)	% of Volume
MP	389.74	12.11
CHHATTISGARH	204.04	6.34
KARNATAKA	180.75	5.62
DELHI	175.58	5.45
TAMIL NADU	167.56	5.21
BIHAR	161.67	5.02
HIMACHAL PRADESH	157.71	4.90
ANDHRA PRADESH	149.86	4.66
ASSAM	128.38	3.99
WEST BENGAL	111.42	3.46
ODISHA	77.43	2.41
HARYANA	65.05	2.02
TELANGANA	62.82	1.95
PUNJAB	49.49	1.54
MAHARASHTRA	49.46	1.54
UTTAR PRADESH	48.17	1.50
J & K	47.57	1.48
NTPC STATIONS-WR	44.81	1.39
NTPC STATIONS-NR	44.04	1.37
ESSAR POWER	40.03	1.24
ARUNACHAL PRADESH	39.30	1.22
RENEW_SOJAS	38.71	1.20
NTPC STATIONS-ER	31.73	0.99
NTPC STATIONS-SR	30.21	0.94
GUJARAT	29.95	0.93
UTTARAKHAND	28.79	0.89
TESPL	28.36	0.88
NEEPCO STATIONS	25.54	0.79
ARTPP	25.42	0.79
NEPAL(NVVN)	25.35	0.79
KERALA	21.45	0.67
NLC	20.40	0.63
SERENTICA RE1 (INFIRM)	19.58	0.61
MTPS	18.56	0.58
SEMBCORP	18.02	0.56
DVC	17.00	0.53
JHABUA POWER_MP	16.45	0.51
MEENAKSHI	16.34	0.51
PONDICHERRY	15.85	0.49
ADHUNIK POWER LTD	15.29	0.48
RKM POWER	14.48	0.45
JHARKHAND	14.47	0.45
AD HYDRO	13.88	0.43
DGEN MEGA POWER	13.56	0.42
JINDAL STAGE-II	12.31	0.38
NREL_DAYAPAR (W)	11.85	0.37
SERENTICA RE4	11.69	0.36
SORANG HEP	11.63	0.36
ADANI_WIND	11.53	0.36
ADANI_4RE	11.21	0.35
JINDAL POWER	11.06	0.34
TRIPURA	10.99	0.34
BALCO	10.10	0.31
TPSL BANDERWALA	9.90	0.31
SKS POWER	9.37	0.29
RAIGARH_ADANI	9.00	0.28
KARCHAM WANGTOO	8.68	0.27
MB POWER	8.46	0.26
DB POWER	8.35	0.26
NOKHRA_STPP	7.02	0.22

SIKKIM	6.93	0.22
GOA	6.89	0.21
RAJASTHAN	6.84	0.21
RAPP 7&8	6.74	0.21
MANIPUR	6.08	0.19
OSTRO Hiriyur	5.99	0.19
SINGOLI BHATWARI HEP	5.79	0.18
SIMHAPURI	5.64	0.18
DCPP	5.50	0.17
SASAN UMPP	5.41	0.17
NPGC	5.40	0.17
NTPC STATIONS-NER	5.05	0.16
ONGC PALATANA	4.62	0.14
ACBIL	4.57	0.14
ADANI GREEN_25B (INFIRM)	4.49	0.14
RENEW_SR_SLR	4.40	0.14
AMP_GREEN6	4.38	0.14
IGSTPS	4.29	0.13
RENEW_ROSHNI	4.18	0.13
MEGHALAYA	4.16	0.13
JITPL	3.96	0.12
SAINJ HEP	3.94	0.12
BASOCHHU HEP	3.41	0.11
GRIAN	3.40	0.11
NETCL VALLUR	2.96	0.09
MAITHON POWER LTD	2.93	0.09
DEVKOOT_SLR	2.50	0.08
NAGALAND	2.35	0.07
DHARIWAL POWER	2.30	0.07
EMCO	2.29	0.07
ASEJTL_SLR	2.24	0.07
RENEW_ROSHNI FATEHGARH	1.73	0.05
SHREE CEMENT	1.65	0.05
NIKACHHU HEP	1.61	0.05
NEP	1.52	0.05
LANCO BUDHIL	1.49	0.05
RENEW_SPRATAP	1.37	0.04
ADANI_S_RJ2	1.16	0.04
TRN ENERGY	1.14	0.04
MARUTI COAL	1.09	0.03
ALTRA XERGI	0.95	0.03
IBEUL	0.90	0.03
ADANIRE_55 (INFIRM)	0.87	0.03
AYANA_RP3	0.81	0.03
RENERGY5_WIND	0.65	0.02
AMPLUS_AGES	0.61	0.02
JORETHANG	0.59	0.02
CHANDIGARH	0.57	0.02
JAYPEE NIGRIE	0.56	0.02
BRBCL, NABINAGAR	0.55	0.02
GMR KAMALANGA	0.42	0.01
DD&DNH	0.42	0.01
IL&FS	0.35	0.01
TASHIDENG HEP	0.33	0.01
MIZORAM	0.22	0.01
CHUZACHEN HEP	0.17	0.01
NANI VIRANI_W	0.03	0.001
ADANI_W_KUTCHH4 (INFIRM)	0.03	0.001
CONTINNUM PT	0.01	0.0003
Total	3218.84	100.00
Volume sold by top 5 Regional Entities	1117.67	34.72
Herfindahl-Hirschman Index		0.0417

Table-25: VOLUME OF ELECTRICITY PURCHASED IN REAL TIME MARKET THROUGH POWER EXCHANGES, JUNE 2024

Name of the Entity	Volume of Purchase (MUs)	% of Volume
RAJASTHAN	511.08	15.88
PUNJAB	505.66	15.71
UTTAR PRADESH	305.39	9.49
TELANGANA	302.47	9.40
WEST BENGAL	191.66	5.95
MAHARASHTRA	191.34	5.94
TAMIL NADU	160.26	4.98
ODISHA	131.49	4.08
GUJARAT	111.21	3.46
JHARKHAND	97.30	3.02
ANDHRA PRADESH	89.36	2.78
BIHAR	89.15	2.77
HARYANA	85.48	2.66
DELHI	53.49	1.66
UTTARAKHAND	48.82	1.52
DVC	33.73	1.05
ASSAM	32.48	1.01
KERALA	30.52	0.95
MP	26.19	0.81
DD&DNH	23.95	0.74
HIMACHAL PRADESH	20.37	0.63
BALCO	18.90	0.59
NEPAL(NVVN)	17.86	0.55
MANIPUR	13.04	0.41
JHABUA POWER_MP	12.33	0.38
AMPS Hazira	11.94	0.37
SIMHAPURI	9.76	0.30
KARNATAKA	9.56	0.30
JINDAL STAGE-II	8.74	0.27
MEGHALAYA	8.44	0.26
TRIPURA	8.12	0.25
NCR ALLAHABAD	7.38	0.23
SKS POWER	5.63	0.17
J & K	5.44	0.17
JINDAL POWER	4.61	0.14
GOA	4.32	0.13
NAGALAND	4.09	0.13
ESSAR POWER	3.84	0.12
CHHATTISGARH	3.26	0.10
DCPP	2.86	0.09
NEA-Bihar	2.85	0.09
ARTPP	2.75	0.09
NEP	2.49	0.08
CHANDIGARH	2.34	0.07
MB POWER	1.83	0.06
SIKKIM	1.14	0.04
NTPC STATIONS-WR	0.89	0.03
RAIGARH_ADANI	0.86	0.03
SAINJ HEP	0.70	0.02
RGPPL_IR	0.66	0.02
MARUTI COAL	0.46	0.01
PONDICHERRY	0.17	0.01
ACBIL	0.10	0.003
DHARIWAL POWER	0.04	0.001
ARUNACHAL PRADESH	0.02	0.001
TOTAL	3218.84	100.00
Volume purchased by top 5 Regional Entities	1816.27	56.43
Herfindahl-Hirschman Index		0.0844

**Table-26: TOTAL VOLUME OF NET TRANSACTIONS THROUGH POWER EXCHANGES
(REGIONAL ENTITY-WISE), JUNE 2024**

S. No.	Name of the Entity	Total volume of net transactions through Power Exchanges*
1	PUNJAB	1347.06
2	TELANGANA	1059.55
3	RAJASTHAN	1041.88
4	GUJARAT	726.07
5	UTTAR PRADESH	680.31
6	WEST BENGAL	264.11
7	MAHARASHTRA	245.15
8	UTTARAKHAND	196.55
9	HARYANA	189.56
10	DD&DNH	166.98
11	ODISHA	161.57
12	TAMIL NADU	139.75
13	JHARKHAND	139.23
14	AMPS Hazira	61.69
15	DVC	54.04
16	NCR ALLAHABAD	40.87
17	NEA-Bihar	27.78
18	CHANDIGARH	21.89
19	NEP	10.36
20	MANIPUR	6.96
21	NAGALAND	3.77
22	TRIPURA	2.15
23	RGPPL_IR	0.66
24	BALCO	0.35
25	CHUZACHEN HEP	-0.17
26	TASHIDENG HEP	-0.33
27	KERALA	-0.42
28	ADANI GREEN_26A (INFIRM)	-0.47
29	JORETHANG	-0.59
30	ALTRA XERGI	-0.95
31	TRN ENERGY	-1.14
32	GMR KAMALANGA	-2.40
33	MAITHON POWER LTD	-2.93
34	NETCL VALLUR	-3.17
35	MB POWER	-3.78
36	RENEW_ROSHNI	-4.18
37	AMP_GREEN6	-4.38
38	ADANI GREEN_25A (INFIRM)	-4.52
39	GRIAN	-4.66
40	NANI VIRANI_W	-4.89
41	NIKACHHU HEP	-4.92
42	JSW_RENEW_2	-5.16
43	SASAN UMPP	-5.41
44	ONGC PALATANA	-6.63
45	DHARIWAL POWER	-6.73
46	RAPP 7&8	-6.74
47	IGSTPS	-6.82
48	IL&FS	-6.86
49	NOKHRA_STPP	-7.02
50	EMCO	-7.34
51	MARUTI COAL	-7.75
52	LANCO BUDHIL	-8.29
53	SIMHAPURI	-8.44

54	IBEUL	-9.01
55	ADANI_W_KUTCHH4 (INFIRM)	-9.57
56	CONTINNUM PT	-10.60
57	BRBCL,NABINAGAR	-10.95
58	NTPC STATIONS-NER	-11.39
59	SIKKIM	-11.52
60	MIZORAM	-11.55
61	KBUNL	-11.60
62	SERENTICA RE4	-11.69
63	NREL_DAYAPAR (W)	-11.85
64	ADANI GREEN_26B (INFIRM)	-11.85
65	AMPLUS_AGES	-12.59
66	RENERGY5_WIND	-13.89
67	SKS POWER	-14.08
68	GOA	-14.55
69	BASOCHHU HEP	-14.58
70	ADHUNIK POWER LTD	-15.29
71	MEENAKSHI	-16.34
72	RISING_SLR	-18.03
73	ONEVOLT	-18.71
74	MTPS	-19.32
75	SERENTICA RE1 (INFIRM)	-19.58
76	ADANIRE_55 (INFIRM)	-20.00
77	NLC	-20.90
78	JHABUA POWER_MP	-21.14
79	BIHAR	-23.25
80	SINGOLI BHATWARI HEP	-25.00
81	NPGC	-25.71
82	SORANG HEP	-25.92
83	NEEPCO STATIONS	-26.44
84	ANDHRA PRADESH	-26.50
85	COASTGEN	-27.30
86	OSTRO Hiriyur	-27.82
87	PONDICHERRY	-27.89
88	RENEW_ROSHNI FATEHGARH	-27.95
89	DEVKOOT_SLR	-28.51
90	ADEPT	-30.70
91	DGEN MEGA POWER	-31.86
92	SAINJ HEP	-34.80
93	AYANA_RP3	-35.50
94	ARUNACHAL PRADESH	-39.27
95	SHREE CEMENT	-42.26
96	TESPL	-42.57
97	ACBIL	-42.95
98	MEGHALAYA	-43.82
99	NTPC STATIONS-SR	-43.92
100	TPSL BANDERWALA	-46.42
101	NTPC STATIONS-WR	-47.05
102	RENEW_SPRATAP	-47.62
103	DCPP	-52.39
104	RKM POWER	-53.90
105	NTPC STATIONS-NR	-56.02
106	J & K	-56.03
107	RENEW_SR_SLR	-56.29
108	ADANI_S_RJ2	-58.76
109	KARCHAM WANGTOO	-69.21
110	ADANI GREEN_25B (INFIRM)	-71.08
111	ASEJTL_SLR	-73.53

112	SEMBCORP	-80.70
113	ADANI_WIND	-84.05
114	JITPL	-86.42
115	AD HYDRO	-90.71
116	DB POWER	-99.20
117	RENEW_SOJAS	-103.79
118	NEPAL(NVVN)	-105.58
119	NTPC STATIONS-ER	-106.64
120	JINDAL POWER	-128.04
121	RAIGARH_ADANI	-155.59
122	ADANI_4RE	-180.23
123	ASSAM	-217.92
124	JAYPEE NIGRIE	-218.46
125	ARTPP	-228.28
126	JINDAL STAGE-II	-249.56
127	ESSAR POWER	-259.79
128	DELHI	-263.33
129	HIMACHAL PRADESH	-394.91
130	MP	-411.60
131	CHHATTISGARH	-490.56
132	KARNATAKA	-777.01
<i>* Total net includes net of transactions of electricity through various segments on power exchanges</i>		
<i>(-) indicates sale and (+) indicates purchase</i>		

Table-27: DETAILS OF CONGESTION IN POWER EXCHANGES, JUNE 2024

	Details of Congestion	Day Ahead Market			Green Day Ahead Market			High Price Day Ahead Market			Real Time Market		
		IEX	PXIL	HPX	IEX	PXIL	HPX	IEX	PXIL	HPX	IEX	PXIL	HPX
1	Unconstrained Cleared Volume (MUs)	4994.90	0.00	0.00	700.46	0.00	0.00	0.20	0.00	0.00	3331.15	0.40	6.56
2	Actual Cleared Volume and hence scheduled (MUs)	4836.23	0.00	0.00	677.06	0.00	0.00	0.20	0.00	0.00	3212.50	0.40	5.93
3	Volume of electricity that could not be cleared and hence not scheduled because of congestion (MUs) *	158.67	0.00	0.00	23.39	0.00	0.00	0.00	0.00	0.00	118.65	0.00	0.62
4	Volume of electricity that could not be cleared and hence not scheduled because of reasons other than congestion (MUs)	0.00	0.00	0.00	0.00	0.00	0.00	0.00	0.00	0.00	0.00	0.00	0.00
5	Volume of electricity that could not be cleared as % to Unconstrained Cleared Volume	3.18%	0.00%	0.00%	3.34%	0.00%	0.00%	0.00%	0.00%	0.00%	3.56%	0.00%	9.53%
6	Percentage of the time congestion occurred during the month (Number of hours congestion occurred/ Total number of hours in the month)	14.93%	0.00%	0.00%	6.67%	0.00%	0.00%	0.00%	0.00%	0.00%	16.77%	0.00%	0.49%
7	Congestion occurrence (%) time block wise												
	0.00 - 6.00 hours	46.05%	0.00%	0.00%	62.50%	0.00%	0.00%	0.00%	0.00%	0.00%	44.72%	0.00%	0.00%
	6.00 - 12.00 hours	8.14%	0.00%	0.00%	9.90%	0.00%	0.00%	0.00%	0.00%	0.00%	5.59%	0.00%	0.00%
	12.00 - 18.00 hours	13.95%	0.00%	0.00%	4.17%	0.00%	0.00%	0.00%	0.00%	0.00%	12.01%	0.00%	0.00%
	18.00 - 24.00 hours	31.86%	0.00%	0.00%	23.44%	0.00%	0.00%	0.00%	0.00%	0.00%	37.68%	0.00%	100.00%
* This power would have been scheduled had there been no congestion													

Source: IEX, PXIL, HPX & NLDC

Table-28: VOLUME OF TRANSACTIONS THROUGH POWER EXCHANGES (DAY-WISE) (MUs), JUNE 2024

Date	Day Ahead Market [#]			Green Day Ahead Market [#]			High Price DAM [#]			Real Time Market [#]			Total Electricity Generation (MU) *
	IEX	PXIL	HPX	IEX	PXIL	HPX	IEX	PXIL	HPX	IEX	PXIL	HPX	
1-Jun-24	171.14	0.00	0.00	20.94	0.00	0.00	0.00	0.00	0.00	109.84	0.00	0.00	4778.64
2-Jun-24	156.13	0.00	0.00	24.36	0.00	0.00	0.00	0.00	0.00	110.10	0.00	0.55	4631.87
3-Jun-24	157.93	0.00	0.00	18.17	0.00	0.00	0.00	0.00	0.00	119.34	0.00	3.63	4810.23
4-Jun-24	170.95	0.00	0.00	25.90	0.00	0.00	0.00	0.00	0.00	116.95	0.00	0.00	4791.76
5-Jun-24	144.23	0.00	0.00	18.56	0.00	0.00	0.00	0.00	0.00	117.86	0.00	0.38	4692.09
6-Jun-24	140.56	0.00	0.00	17.39	0.00	0.00	0.00	0.00	0.00	134.14	0.00	0.00	4568.22
7-Jun-24	127.32	0.00	0.00	23.47	0.00	0.00	0.00	0.00	0.00	83.54	0.00	0.00	4742.71
8-Jun-24	153.75	0.00	0.00	21.85	0.00	0.00	0.00	0.00	0.00	91.91	0.00	0.00	4674.59
9-Jun-24	135.70	0.00	0.00	24.59	0.00	0.00	0.00	0.00	0.00	134.17	0.00	0.00	4423.64
10-Jun-24	155.92	0.00	0.00	23.23	0.00	0.00	0.20	0.00	0.00	108.80	0.00	0.00	4572.64
11-Jun-24	153.36	0.00	0.00	30.77	0.00	0.00	0.00	0.00	0.00	103.53	0.00	0.00	4627.63
12-Jun-24	159.17	0.00	0.00	23.95	0.00	0.00	0.00	0.00	0.00	77.36	0.00	0.00	4665.53
13-Jun-24	167.01	0.00	0.00	20.78	0.00	0.00	0.00	0.00	0.00	79.97	0.00	0.00	4692.14
14-Jun-24	174.34	0.00	0.00	19.01	0.00	0.00	0.00	0.00	0.00	78.28	0.00	0.00	4690.12
15-Jun-24	154.19	0.00	0.00	24.97	0.00	0.00	0.00	0.00	0.00	118.38	0.00	0.20	4755.87
16-Jun-24	142.93	0.00	0.00	28.59	0.00	0.00	0.00	0.00	0.00	118.54	0.00	0.92	4735.04
17-Jun-24	163.58	0.00	0.00	17.18	0.00	0.00	0.00	0.00	0.00	104.02	0.00	0.11	4930.10
18-Jun-24	138.54	0.00	0.00	18.52	0.00	0.00	0.00	0.00	0.00	94.10	0.00	0.00	4798.29
19-Jun-24	144.22	0.00	0.00	20.51	0.00	0.00	0.00	0.00	0.00	118.49	0.00	0.00	4670.10
20-Jun-24	189.30	0.00	0.00	26.17	0.00	0.00	0.00	0.00	0.00	114.35	0.00	0.00	4386.13
21-Jun-24	165.86	0.00	0.00	18.69	0.00	0.00	0.00	0.00	0.00	119.36	0.00	0.00	4551.04
22-Jun-24	169.40	0.00	0.00	22.63	0.00	0.00	0.00	0.00	0.00	119.05	0.00	0.00	4685.24
23-Jun-24	163.63	0.00	0.00	19.65	0.00	0.00	0.00	0.00	0.00	120.45	0.00	0.00	4503.97
24-Jun-24	173.17	0.00	0.00	21.97	0.00	0.00	0.00	0.00	0.00	116.79	0.00	0.00	4692.23
25-Jun-24	181.90	0.00	0.00	22.07	0.00	0.00	0.00	0.00	0.00	104.00	0.00	0.00	4754.24
26-Jun-24	182.43	0.00	0.00	23.88	0.00	0.00	0.00	0.00	0.00	108.58	0.05	0.15	4700.91
27-Jun-24	181.33	0.00	0.00	25.79	0.00	0.00	0.00	0.00	0.00	103.11	0.20	0.00	4541.40
28-Jun-24	165.61	0.00	0.00	28.38	0.00	0.00	0.00	0.00	0.00	87.75	0.15	0.00	4501.51
29-Jun-24	174.06	0.00	0.00	24.16	0.00	0.00	0.00	0.00	0.00	97.47	0.00	0.00	4474.30
30-Jun-24	178.55	0.00	0.00	20.92	0.00	0.00	0.00	0.00	0.00	102.27	0.00	0.00	4199.77
Total	4836.23	0.00	0.00	677.06	0.00	0.00	0.20	0.00	0.00	3212.50	0.40	5.93	139241.95

Source: NLDC

* As available on CEA Website. Gross Electricity Generation excluding electricity generation from renewables and captive power plants.

[#] Scheduled volume of all the bid areas.

Note: With change in the regime on implementation of GNA Regulations from 1st October 2023, the volume reported here is not strictly comparable to the volumes in previous months. Some discrepancies were identified by CERC in the data provided by NLDC which prompted further validation. The volume herein is computed after verification with the volumes reported by the Trading Licensees and the Power Exchanges, and are subject to further revision. The Commission has directed NLDC, vide letter dated 05.01.2024, to make necessary provisions to differentiate the type of transactions under GNA and T-GNA at the earliest. In the interim, the columns for daily volume of bilateral transactions have been omitted from this table.

Table-29(a): PRICE OF DAY AHEAD TRANSACTIONS OF ELECTRICITY (DAY-WISE) (₹/kWh), JUNE 2024

Market Segment	Day Ahead Market of IEX			Day Ahead Market of PXIL			Day Ahead Market of HPX		
	Minimum ACP	Maximum ACP	WA Price*	Minimum ACP	Maximum ACP	WA Price*	Minimum ACP	Maximum ACP	WA Price*
1-Jun-24	2.00	10.00	5.31	-	-	-	-	-	-
2-Jun-24	1.50	10.00	4.62	-	-	-	-	-	-
3-Jun-24	1.80	10.00	4.75	-	-	-	-	-	-
4-Jun-24	3.00	10.00	5.47	-	-	-	-	-	-
5-Jun-24	3.00	10.00	5.50	-	-	-	-	-	-
6-Jun-24	2.00	10.00	4.96	-	-	-	-	-	-
7-Jun-24	1.80	10.00	4.49	-	-	-	-	-	-
8-Jun-24	1.70	10.00	4.35	-	-	-	-	-	-
9-Jun-24	1.20	10.00	3.44	-	-	-	-	-	-
10-Jun-24	1.70	10.00	4.55	-	-	-	-	-	-
11-Jun-24	2.92	10.00	4.56	-	-	-	-	-	-
12-Jun-24	2.00	10.00	4.57	-	-	-	-	-	-
13-Jun-24	1.80	10.00	4.63	-	-	-	-	-	-
14-Jun-24	1.80	10.00	4.45	-	-	-	-	-	-
15-Jun-24	1.80	10.00	4.34	-	-	-	-	-	-
16-Jun-24	1.70	10.00	4.75	-	-	-	-	-	-
17-Jun-24	2.00	10.00	5.16	-	-	-	-	-	-
18-Jun-24	2.00	10.00	5.42	-	-	-	-	-	-
19-Jun-24	2.00	10.00	5.54	-	-	-	-	-	-
20-Jun-24	2.00	10.00	5.90	-	-	-	-	-	-
21-Jun-24	1.60	10.00	4.06	-	-	-	-	-	-
22-Jun-24	1.50	10.00	4.04	-	-	-	-	-	-
23-Jun-24	1.20	10.00	3.90	-	-	-	-	-	-
24-Jun-24	1.87	10.00	4.58	-	-	-	-	-	-
25-Jun-24	2.62	10.00	4.57	-	-	-	-	-	-
26-Jun-24	2.00	10.00	4.64	-	-	-	-	-	-
27-Jun-24	2.00	10.00	5.04	-	-	-	-	-	-
28-Jun-24	1.50	10.00	4.42	-	-	-	-	-	-
29-Jun-24	1.30	10.00	3.50	-	-	-	-	-	-
30-Jun-24	1.00	10.00	3.36	-	-	-	-	-	-
	1.00[#]	10.00[#]	4.63	-	-	-	-	-	-

Source: IEX, PXIL and HPX

* Weighted average price computed based on Area Clearing Volume (ACV) and Area Clearing Price (ACP) for each hour of the day. Here, ACV and ACP represent the scheduled volume and weighted average price of all the bid areas of power exchanges.

Maximum/Minimum in the month

**Table-29(b): PRICE OF GREEN DAY AHEAD TRANSACTIONS OF ELECTRICITY (DAY-WISE) (₹/kWh),
JUNE 2024**

Market Segment	Green Day Ahead Market of IEX			Green Day Ahead Market of PXIL			Green Day Ahead Market of HPX		
Date	Minimum ACP	Maximum ACP	Weighted Average Price*	Minimum ACP	Maximum ACP	Weighted Average Price*	Minimum ACP	Maximum ACP	Weighted Average Price*
1-Jun-24	2.43	10.00	4.29	-	-	-	-	-	-
2-Jun-24	2.00	10.00	3.41	-	-	-	-	-	-
3-Jun-24	2.86	10.00	4.63	-	-	-	-	-	-
4-Jun-24	2.80	10.00	4.07	-	-	-	-	-	-
5-Jun-24	2.86	10.00	4.81	-	-	-	-	-	-
6-Jun-24	2.86	10.00	4.92	-	-	-	-	-	-
7-Jun-24	2.00	10.00	4.18	-	-	-	-	-	-
8-Jun-24	2.00	10.00	3.60	-	-	-	-	-	-
9-Jun-24	1.90	10.00	3.13	-	-	-	-	-	-
10-Jun-24	2.70	10.00	3.79	-	-	-	-	-	-
11-Jun-24	2.10	10.00	3.88	-	-	-	-	-	-
12-Jun-24	2.20	10.00	3.89	-	-	-	-	-	-
13-Jun-24	2.71	10.00	3.97	-	-	-	-	-	-
14-Jun-24	2.71	10.00	4.23	-	-	-	-	-	-
15-Jun-24	2.00	10.00	3.80	-	-	-	-	-	-
16-Jun-24	1.80	10.00	3.68	-	-	-	-	-	-
17-Jun-24	2.30	10.00	4.66	-	-	-	-	-	-
18-Jun-24	2.30	10.00	4.90	-	-	-	-	-	-
19-Jun-24	2.00	10.00	4.68	-	-	-	-	-	-
20-Jun-24	2.00	10.00	5.08	-	-	-	-	-	-
21-Jun-24	2.00	10.00	4.22	-	-	-	-	-	-
22-Jun-24	1.60	10.00	2.93	-	-	-	-	-	-
23-Jun-24	1.60	10.00	3.39	-	-	-	-	-	-
24-Jun-24	1.80	10.00	3.64	-	-	-	-	-	-
25-Jun-24	2.20	10.00	3.92	-	-	-	-	-	-
26-Jun-24	2.50	10.00	4.53	-	-	-	-	-	-
27-Jun-24	2.80	10.00	4.36	-	-	-	-	-	-
28-Jun-24	2.00	10.00	4.52	-	-	-	-	-	-
29-Jun-24	1.50	10.00	3.81	-	-	-	-	-	-
30-Jun-24	1.20	10.00	3.57	-	-	-	-	-	-
	1.20[#]	10.00[#]	4.06	-	-	-	-	-	-

Source: IEX, PXIL and HPX

* Weighted average price computed based on Area Clearing Volume (ACV) and Area Clearing Price (ACP) for each hour of the day. Here, ACV and ACP represent the scheduled volume and weighted average price of all the bid areas of power exchanges.

Maximum/Minimum in the month

Table-29(c): PRICE OF REAL TIME TRANSACTIONS OF ELECTRICITY (DAY-WISE) (₹/kWh), JUNE 2024

Market Segment	Real Time Market of IEX			Real Time Market of PXIL			Real Time Market of HPX		
	Minimum ACP	Maximum ACP	Weighted Average Price*	Minimum ACP	Maximum ACP	Weighted Average Price*	Minimum ACP	Maximum ACP	Weighted Average Price*
1-Jun-24	0.99	10.00	5.08	-	-	-	-	-	-
2-Jun-24	1.00	10.00	4.54	-	-	-	10.00	10.00	10.00
3-Jun-24	2.50	10.00	6.08	-	-	-	10.00	10.00	10.00
4-Jun-24	2.98	10.00	6.13	-	-	-	-	-	-
5-Jun-24	1.50	10.00	4.84	-	-	-	10.00	10.00	10.00
6-Jun-24	0.99	10.00	3.77	-	-	-	-	-	-
7-Jun-24	2.26	10.00	4.74	-	-	-	-	-	-
8-Jun-24	1.50	10.00	4.29	-	-	-	-	-	-
9-Jun-24	0.87	10.00	3.66	-	-	-	-	-	-
10-Jun-24	2.40	10.00	5.05	-	-	-	-	-	-
11-Jun-24	2.00	10.00	5.00	-	-	-	-	-	-
12-Jun-24	2.74	10.00	4.94	-	-	-	-	-	-
13-Jun-24	1.20	10.00	4.36	-	-	-	-	-	-
14-Jun-24	1.50	10.00	4.29	-	-	-	-	-	-
15-Jun-24	2.00	10.00	5.38	-	-	-	10.00	10.00	10.00
16-Jun-24	2.00	10.00	5.74	-	-	-	10.00	10.00	10.00
17-Jun-24	1.99	10.00	6.55	-	-	-	10.00	10.00	10.00
18-Jun-24	0.82	10.00	4.31	-	-	-	-	-	-
19-Jun-24	1.76	10.00	4.30	-	-	-	-	-	-
20-Jun-24	0.50	10.00	2.81	-	-	-	-	-	-
21-Jun-24	0.99	10.00	4.44	-	-	-	-	-	-
22-Jun-24	2.66	10.00	5.23	-	-	-	-	-	-
23-Jun-24	1.89	10.00	3.99	-	-	-	-	-	-
24-Jun-24	2.76	10.00	5.11	-	-	-	-	-	-
25-Jun-24	2.70	10.00	5.31	-	-	-	-	-	-
26-Jun-24	2.50	10.00	5.46	10.00	10.00	10.00	10.00	10.00	10.00
27-Jun-24	0.49	10.00	3.63	10.00	10.00	10.00	-	-	-
28-Jun-24	0.59	10.00	3.38	10.00	10.00	10.00	-	-	-
29-Jun-24	1.60	10.00	3.22	-	-	-	-	-	-
30-Jun-24	0.50	4.00	2.38	-	-	-	-	-	-
	0.49[#]	10.00[#]	4.62	10.00[#]	10.00[#]	10.00	10.00[#]	10.00[#]	10.00

Source: IEX, PXIL and HPX

* Weighted average price computed based on Area Clearing Volume (ACV) and Area Clearing Price (ACP) for each hour of the day. Here, ACV and ACP represent the scheduled volume and weighted average price of all the bid areas of power exchanges.

Maximum/Minimum in the month

**Table-29(d): PRICE OF HIGH PRICE DAY AHEAD TRANSACTIONS OF ELECTRICITY (DAY-WISE) (₹/kWh),
JUNE 2024**

Market Segment	High Price Day Ahead Market of IEX			High Price Day Ahead Market of PXIL			High Price Day Ahead Market of HPX		
	Minimum ACP	Maximum ACP	Weighted Average Price	Minimum ACP	Maximum ACP	Weighted Average Price	Minimum ACP	Maximum ACP	Weighted Average Price
1-Jun-24	-	-	-	-	-	-	-	-	-
2-Jun-24	-	-	-	-	-	-	-	-	-
3-Jun-24	-	-	-	-	-	-	-	-	-
4-Jun-24	-	-	-	-	-	-	-	-	-
5-Jun-24	-	-	-	-	-	-	-	-	-
6-Jun-24	-	-	-	-	-	-	-	-	-
7-Jun-24	-	-	-	-	-	-	-	-	-
8-Jun-24	-	-	-	-	-	-	-	-	-
9-Jun-24	-	-	-	-	-	-	-	-	-
10-Jun-24	11.26	11.26	11.26	-	-	-	-	-	-
11-Jun-24	-	-	-	-	-	-	-	-	-
12-Jun-24	-	-	-	-	-	-	-	-	-
13-Jun-24	-	-	-	-	-	-	-	-	-
14-Jun-24	-	-	-	-	-	-	-	-	-
15-Jun-24	-	-	-	-	-	-	-	-	-
16-Jun-24	-	-	-	-	-	-	-	-	-
17-Jun-24	-	-	-	-	-	-	-	-	-
18-Jun-24	-	-	-	-	-	-	-	-	-
19-Jun-24	-	-	-	-	-	-	-	-	-
20-Jun-24	-	-	-	-	-	-	-	-	-
21-Jun-24	-	-	-	-	-	-	-	-	-
22-Jun-24	-	-	-	-	-	-	-	-	-
23-Jun-24	-	-	-	-	-	-	-	-	-
24-Jun-24	-	-	-	-	-	-	-	-	-
25-Jun-24	-	-	-	-	-	-	-	-	-
26-Jun-24	-	-	-	-	-	-	-	-	-
27-Jun-24	-	-	-	-	-	-	-	-	-
28-Jun-24	-	-	-	-	-	-	-	-	-
29-Jun-24	-	-	-	-	-	-	-	-	-
30-Jun-24	-	-	-	-	-	-	-	-	-
	11.26[#]	11.26[#]	11.26	-	-	-	-	-	-

Source: IEX, PXIL and HPX

Maximum/Minimum in the month

**Table-30: VOLUME OF TRANSACTIONS THROUGH POWER EXCHANGES (REGIONAL ENTITY*-WISE) (MUs),
JUNE 2024**

Name of the Entity	Through DAM		Through GDAM		Through HP-DAM		Through RTM		Total Net***
	Sale	Purchase	Sale	Purchase	Sale	Purchase	Sale	Purchase	
PUNJAB	0.00	625.63	0.00	265.26	0.00	0.00	49.49	505.66	1347.06
HARYANA	25.02	184.10	0.00	10.05	0.00	0.00	65.05	85.48	189.56
RAJASTHAN	47.56	592.22	7.03	0.00	0.00	0.00	6.84	511.08	1041.88
DELHI	185.71	35.49	0.59	9.58	0.00	0.00	175.58	53.49	-263.33
UTTAR PRADESH	40.26	463.93	22.97	22.39	0.00	0.00	48.17	305.39	680.31
UTTARAKHAND	0.16	196.17	19.49	0.00	0.00	0.00	28.79	48.82	196.55
HIMACHAL P	231.58	1.53	27.56	0.04	0.00	0.00	157.71	20.37	-394.91
J & K	7.43	1.85	8.32	0.00	0.00	0.00	47.57	5.44	-56.03
CHANDIGARH	3.34	23.45	0.00	0.00	0.00	0.00	0.57	2.34	21.89
MP	58.87	34.63	27.21	3.40	0.00	0.00	389.74	26.19	-411.60
MAHARASHTRA	95.24	150.87	29.75	77.39	0.00	0.00	49.46	191.34	245.15
GUJARAT	74.58	704.42	0.00	14.96	0.00	0.00	29.95	111.21	726.07
CHHATTISGARH	291.22	1.22	0.00	0.22	0.00	0.00	204.04	3.26	-490.56
GOA	22.36	10.38	0.00	0.00	0.00	0.00	6.89	4.32	-14.55
DD&DNH	0.00	143.45	0.00	0.00	0.00	0.00	0.42	23.95	166.98
ANDHRA P	53.60	134.19	54.60	8.01	0.00	0.00	149.86	89.36	-26.50
KARNATAKA	621.95	24.52	29.02	20.63	0.00	0.00	180.75	9.56	-777.01
KERALA	33.89	18.39	0.00	6.01	0.00	0.00	21.45	30.52	-0.42
TAMIL NADU	32.35	151.87	0.00	27.53	0.00	0.00	167.56	160.26	139.75
PONDICHERRY	12.42	0.20	0.00	0.00	0.00	0.00	15.85	0.17	-27.89
TELANGANA	32.91	846.52	0.00	6.29	0.00	0.00	62.82	302.47	1059.55
WEST BENGAL	29.88	224.57	11.04	0.00	0.00	0.20	111.42	191.66	264.11
ODISHA	43.89	104.82	0.00	46.59	0.00	0.00	77.43	131.49	161.57
BIHAR	0.88	50.15	0.00	0.00	0.00	0.00	161.67	89.15	-23.25
JHARKHAND	0.00	7.99	0.00	48.41	0.00	0.00	14.47	97.30	139.23
SIKKIM	2.38	5.55	9.26	0.37	0.00	0.00	6.93	1.14	-11.52
DVC	20.53	8.06	0.00	49.79	0.00	0.00	17.00	33.73	54.04
ARUNACHAL P	0.00	0.00	0.00	0.00	0.00	0.00	39.30	0.02	-39.27
ASSAM	124.71	2.69	0.00	0.00	0.00	0.00	128.38	32.48	-217.92
MANIPUR	0.00	0.00	0.00	0.00	0.00	0.00	6.08	13.04	6.96
MEGHALAYA	49.10	0.99	0.00	0.01	0.00	0.00	4.16	8.44	-43.82
MIZORAM	11.33	0.00	0.00	0.00	0.00	0.00	0.22	0.00	-11.55
NAGALAND	1.38	3.41	0.00	0.00	0.00	0.00	2.35	4.09	3.77
TRIPURA	0.00	5.03	0.00	0.00	0.00	0.00	10.99	8.12	2.15
NTPC STATIONS-NR	11.98	0.00	0.00	0.00	0.00	0.00	44.04	0.00	-56.02
NEP	2.74	12.13	0.00	0.00	0.00	0.00	1.52	2.49	10.36
AD HYDRO	76.83	0.00	0.00	0.00	0.00	0.00	13.88	0.00	-90.71
IGSTPS	2.53	0.00	0.00	0.00	0.00	0.00	4.29	0.00	-6.82
KARCHAM WANGTOO	60.53	0.00	0.00	0.00	0.00	0.00	8.68	0.00	-69.21
SHREE CEMENT	40.61	0.00	0.00	0.00	0.00	0.00	1.65	0.00	-42.26
LANCO BUDHIL	6.80	0.00	0.00	0.00	0.00	0.00	1.49	0.00	-8.29
SORANG HEP	14.30	0.00	0.00	0.00	0.00	0.00	11.63	0.00	-25.92
SAINJ HEP	31.55	0.00	0.00	0.00	0.00	0.00	3.94	0.70	-34.80
ASEJTL_SLR	40.67	0.00	30.62	0.00	0.00	0.00	2.24	0.00	-73.53
SINGOLI BHATWARI H	11.64	0.00	7.57	0.00	0.00	0.00	5.79	0.00	-25.00
NCR ALLAHABAD	0.00	13.97	0.00	19.51	0.00	0.00	0.00	7.38	40.87
RENEW_SR_SLR	43.50	0.00	8.39	0.00	0.00	0.00	4.40	0.00	-56.29
DEVKOOT_SLR	26.01	0.00	0.00	0.00	0.00	0.00	2.50	0.00	-28.51
NOKHRA_STPP	0.00	0.00	0.00	0.00	0.00	0.00	7.02	0.00	-7.02
RAPP 7&8	0.00	0.00	0.00	0.00	0.00	0.00	6.74	0.00	-6.74
RISING_SLR	0.00	0.00	18.03	0.00	0.00	0.00	0.00	0.00	-18.03
AMP_GREEN6	0.00	0.00	0.00	0.00	0.00	0.00	4.38	0.00	-4.38
ALTRA XERGI	0.00	0.00	0.00	0.00	0.00	0.00	0.95	0.00	-0.95
ONEVOLT	18.71	0.00	0.00	0.00	0.00	0.00	0.00	0.00	-18.71
GRIAN	1.26	0.00	0.00	0.00	0.00	0.00	3.40	0.00	-4.66
AMPLUS_AGES	0.00	0.00	11.98	0.00	0.00	0.00	0.61	0.00	-12.59
RENEW_SPRATAP	46.25	0.00	0.00	0.00	0.00	0.00	1.37	0.00	-47.62

RENEW_ROSHNI FATEHGARH	16.91	0.00	9.31	0.00	0.00	0.00	1.73	0.00	-27.95
ADEPT	30.70	0.00	0.00	0.00	0.00	0.00	0.00	0.00	-30.70
TESPL	2.65	0.00	11.56	0.00	0.00	0.00	28.36	0.00	-42.57
ADANI_S_RJ2	45.28	0.00	12.33	0.00	0.00	0.00	1.16	0.00	-58.76
SERENTICA RE4	0.00	0.00	0.00	0.00	0.00	0.00	11.69	0.00	-11.69
AYANA_RP3	5.65	0.00	29.04	0.00	0.00	0.00	0.81	0.00	-35.50
TPSL BANDERWALA	4.64	0.00	31.88	0.00	0.00	0.00	9.90	0.00	-46.42
NTPC STATIONS-WR	3.13	0.00	0.00	0.00	0.00	0.00	44.81	0.89	-47.05
JINDAL POWER	122.97	1.37	0.00	0.00	0.00	0.00	11.06	4.61	-128.04
ACBIL	38.48	0.00	0.00	0.00	0.00	0.00	4.57	0.10	-42.95
BALCO	10.32	0.48	0.00	1.39	0.00	0.00	10.10	18.90	0.35
DCPP	49.75	0.00	0.00	0.00	0.00	0.00	5.50	2.86	-52.39
EMCO	5.05	0.00	0.00	0.00	0.00	0.00	2.29	0.00	-7.34
ESSAR POWER	223.60	0.00	0.00	0.00	0.00	0.00	40.03	3.84	-259.79
JINDAL STAGE-II	246.00	0.00	0.00	0.00	0.00	0.00	12.31	8.74	-249.56
DB POWER	90.85	0.00	0.00	0.00	0.00	0.00	8.35	0.00	-99.20
DHARIWAL POWER	4.47	0.00	0.00	0.00	0.00	0.00	2.30	0.04	-6.73
JAYPEE NIGRIE	217.90	0.00	0.00	0.00	0.00	0.00	0.56	0.00	-218.46
DGEN MEGA POWER	18.10	0.00	0.00	0.00	0.20	0.00	13.56	0.00	-31.86
MB POWER	0.00	2.84	0.00	0.00	0.00	0.00	8.46	1.83	-3.78
MARUTI COAL	7.12	0.00	0.00	0.00	0.00	0.00	1.09	0.46	-7.75
JHABUA POWER_MP	27.30	10.27	0.00	0.00	0.00	0.00	16.45	12.33	-21.14
SASAN UMPP	0.00	0.00	0.00	0.00	0.00	0.00	5.41	0.00	-5.41
TRN ENERGY	0.00	0.00	0.00	0.00	0.00	0.00	1.14	0.00	-1.14
RKM POWER	39.42	0.00	0.00	0.00	0.00	0.00	14.48	0.00	-53.90
SKS POWER	11.77	1.43	0.00	0.00	0.00	0.00	9.37	5.63	-14.08
AMPS Hazira	0.00	10.51	0.00	39.24	0.00	0.00	0.00	11.94	61.69
RGPPL_IR	0.00	0.00	0.00	0.00	0.00	0.00	0.00	0.66	0.66
ADANI_WIND	58.23	0.00	14.29	0.00	0.00	0.00	11.53	0.00	-84.05
CONTINNUM PT	0.00	0.00	10.59	0.00	0.00	0.00	0.01	0.00	-10.60
RENERGY5_WIND	10.86	0.00	2.38	0.00	0.00	0.00	0.65	0.00	-13.89
ARTPP	205.61	0.00	0.00	0.00	0.00	0.00	25.42	2.75	-228.28
MTPS	0.76	0.00	0.00	0.00	0.00	0.00	18.56	0.00	-19.32
RAIGARH_ADANI	147.44	0.00	0.00	0.00	0.00	0.00	9.00	0.86	-155.59
NREL_DAYAPAR (W)	0.00	0.00	0.00	0.00	0.00	0.00	11.85	0.00	-11.85
ADANI_4RE	44.32	0.00	124.71	0.00	0.00	0.00	11.21	0.00	-180.23
ADANI_W_KUTCHH4 (INFIRM)	3.46	0.00	6.08	0.00	0.00	0.00	0.03	0.00	-9.57
ADANI GREEN_25B (INFIRM)	37.33	0.00	29.26	0.00	0.00	0.00	4.49	0.00	-71.08
ADANI GREEN_26B (INFIRM)	5.72	0.00	6.13	0.00	0.00	0.00	0.00	0.00	-11.85
NANI VIRANI_W	0.03	0.00	4.82	0.00	0.00	0.00	0.03	0.00	-4.89
ADANI GREEN_26A (INFIRM)	0.19	0.00	0.28	0.00	0.00	0.00	0.00	0.00	-0.47
ADANIRE_55 (INFIRM)	9.65	0.00	9.48	0.00	0.00	0.00	0.87	0.00	-20.00
ADANI GREEN_25A (INFIRM)	1.83	0.00	2.69	0.00	0.00	0.00	0.00	0.00	-4.52
NTPC STATIONS-SR	10.58	0.00	3.13	0.00	0.00	0.00	30.21	0.00	-43.92
SIMHAPURI	12.56	0.00	0.00	0.00	0.00	0.00	5.64	9.76	-8.44
MEENAKSHI	0.00	0.00	0.00	0.00	0.00	0.00	16.34	0.00	-16.34
COASTGEN	27.30	0.00	0.00	0.00	0.00	0.00	0.00	0.00	-27.30
IL&FS	6.51	0.00	0.00	0.00	0.00	0.00	0.35	0.00	-6.86
NLC	0.50	0.00	0.00	0.00	0.00	0.00	20.40	0.00	-20.90
SEMBCORP	62.68	0.00	0.00	0.00	0.00	0.00	18.02	0.00	-80.70
NETCL VALLUR	0.21	0.00	0.00	0.00	0.00	0.00	2.96	0.00	-3.17
OSTRO Hiriyur	10.47	0.00	11.36	0.00	0.00	0.00	5.99	0.00	-27.82
JSW_RENEW_2	0.00	0.00	5.16	0.00	0.00	0.00	0.00	0.00	-5.16
RENEW_ROSHNI	0.00	0.00	0.00	0.00	0.00	0.00	4.18	0.00	-4.18
RENEW_SOJAS	35.92	0.00	29.16	0.00	0.00	0.00	38.71	0.00	-103.79
SERENTICA RE1	0.00	0.00	0.00	0.00	0.00	0.00	19.58	0.00	-19.58

(INFIRM)										
NTPC STATIONS-ER	74.90	0.00	0.00	0.00	0.00	0.00	0.00	31.73	0.00	-106.64
MAITHON POWER LTD	0.00	0.00	0.00	0.00	0.00	0.00	0.00	2.93	0.00	-2.93
NPGC	20.31	0.00	0.00	0.00	0.00	0.00	0.00	5.40	0.00	-25.71
ADHUNIK POWER LTD	0.00	0.00	0.00	0.00	0.00	0.00	0.00	15.29	0.00	-15.29
CHUZACHEN HEP	0.00	0.00	0.00	0.00	0.00	0.00	0.00	0.17	0.00	-0.17
GMR KAMALANGA	1.98	0.00	0.00	0.00	0.00	0.00	0.00	0.42	0.00	-2.40
JITPL	82.46	0.00	0.00	0.00	0.00	0.00	0.00	3.96	0.00	-86.42
JORETHANG	0.00	0.00	0.00	0.00	0.00	0.00	0.00	0.59	0.00	-0.59
NEPAL(NVVN)	98.09	0.00	0.00	0.00	0.00	0.00	0.00	25.35	17.86	-105.58
TASHIDENG HEP	0.00	0.00	0.00	0.00	0.00	0.00	0.00	0.33	0.00	-0.33
BRBCL, NABINAGAR	10.40	0.00	0.00	0.00	0.00	0.00	0.00	0.55	0.00	-10.95
KBUNL	11.60	0.00	0.00	0.00	0.00	0.00	0.00	0.00	0.00	-11.60
BASOCHHU HEP	11.18	0.00	0.00	0.00	0.00	0.00	0.00	3.41	0.00	-14.58
IBEUL	8.11	0.00	0.00	0.00	0.00	0.00	0.00	0.90	0.00	-9.01
NEA-Bihar	0.00	24.93	0.00	0.00	0.00	0.00	0.00	0.00	2.85	27.78
NIKACHHU HEP	3.31	0.00	0.00	0.00	0.00	0.00	0.00	1.609	0.00	-4.92
NTPC STATIONS-NER	6.34	0.00	0.00	0.00	0.00	0.00	0.00	5.05	0.00	-11.39
NEEPCO STATIONS	0.90	0.00	0.00	0.00	0.00	0.00	0.00	25.54	0.00	-26.44
ONGC PALATANA	2.01	0.00	0.00	0.00	0.00	0.00	0.00	4.621	0.00	-6.63
<i>Source: NLDC</i>										
<i>* in case of a state, the entities which are "selling" also include generators connected to state grid and the entities which are "buying" also include open access consumers.</i>										
<i>** (-) indicates sale and (+) indicates purchase,</i>										
<i>*** Total net includes net of transactions through various segments on power exchanges</i>										

Table-31: VOLUME AND CHARGES UNDER DSM (DAY-WISE), JUNE 2024

Date	Volume (MU)	All India Grid Charges (₹/kWh)		
		Minimum	Maximum	Average
1-Jun-24	91.66	2.00	10.00	6.13
2-Jun-24	84.88	2.00	10.00	5.31
3-Jun-24	93.48	2.23	10.00	6.18
4-Jun-24	91.62	2.90	10.00	6.37
5-Jun-24	98.04	2.00	10.00	6.55
6-Jun-24	103.53	2.00	10.00	5.95
7-Jun-24	95.76	1.97	10.00	5.58
8-Jun-24	94.25	1.76	10.00	4.74
9-Jun-24	90.69	1.36	10.00	4.29
10-Jun-24	91.53	2.28	10.16	5.43
11-Jun-24	95.73	2.47	10.00	5.38
12-Jun-24	89.05	2.85	10.00	5.42
13-Jun-24	89.84	2.33	10.00	5.32
14-Jun-24	93.63	1.80	10.00	4.96
15-Jun-24	91.80	2.00	10.00	5.87
16-Jun-24	91.52	2.00	10.00	6.39
17-Jun-24	87.74	2.71	10.00	7.33
18-Jun-24	88.42	2.00	10.00	6.95
19-Jun-24	96.35	2.64	10.00	7.04
20-Jun-24	99.62	2.00	10.00	6.64
21-Jun-24	99.85	1.60	10.00	4.93
22-Jun-24	93.56	2.66	10.00	5.51
23-Jun-24	89.69	1.89	10.00	4.74
24-Jun-24	104.88	2.76	10.00	5.64
25-Jun-24	94.96	2.76	10.00	5.85
26-Jun-24	101.07	2.71	10.00	5.89
27-Jun-24	102.71	2.00	10.00	5.59
28-Jun-24	100.83	1.50	10.00	4.75
29-Jun-24	96.87	1.60	10.00	3.91
30-Jun-24	95.92	1.20	10.00	3.56
Total	2839.49	1.20[#]	10.16[#]	5.61
<i>Source: NLDC</i>				
<i># Maximum/Minimum in the month</i>				

Table-32: VOLUME OF ELECTRICITY UNDER DRAWAL/ OVER INJECTION (EXPORTED) UNDER DSM, JUNE 2024

Name of the Entity	Volume of Under drawal/ Over injection (MUs)	% of Volume
HARYANA	160.41	5.40
PUNJAB	146.70	4.94
DELHI	144.52	4.87
TAMIL NADU	139.77	4.71
MAHARASHTRA	112.94	3.80
MP	109.55	3.69
UTTAR PRADESH	105.42	3.55
RAJASTHAN	97.94	3.30
NTPC STATIONS-SR	95.56	3.22
GUJARAT	95.24	3.21
ANDHRA PRADESH	85.44	2.88
J & K	78.29	2.64
KARNATAKA	70.97	2.39
BIHAR	67.51	2.27
TELANGANA	67.10	2.26
NTPC STATIONS-NR	66.97	2.25
CHHATTISGARH	62.42	2.10
NTPC STATIONS-WR	59.23	1.99
JHARKHAND	47.20	1.59
UTTARAKHAND	35.48	1.19
NHPC STATIONS	35.21	1.19
NTPC STATIONS-ER	31.15	1.05
ODISHA	30.10	1.01
NEEPCO STATIONS	29.00	0.98
DVC	26.06	0.88
ADANI_4RE	21.99	0.74
WEST BENGAL	19.91	0.67
JINDAL STAGE-II	19.11	0.64
SASAN UMPP	17.83	0.60
RAIL	17.78	0.60
NLC	17.38	0.59
HIMACHAL PRADESH	16.65	0.56
AMPS Hazira	16.01	0.54
NJPC	14.65	0.49
BBMB	14.41	0.49
IGSTPS	13.94	0.47
MANIPUR	13.88	0.47
THERMAL POWERTECH	13.85	0.47
GOA	13.36	0.45
ASSAM	12.94	0.44
KERALA	12.73	0.43
JAYPEE NIGRIE	12.70	0.43
AYANA_NPKUNTA	12.48	0.42
JSW_RENEW_2	12.18	0.41
AGEMPL BHUJ	12.11	0.41
SBESS	10.91	0.37
NEPAL(NVVN)	10.42	0.35
RKM POWER	10.40	0.35
GRT_JPL	10.31	0.35
KARCHAM WANGTOO	9.67	0.33
PONDICHERRY	9.66	0.33
RENEW_SOJAS	9.48	0.32
KREDL_PVGD	9.24	0.31
PARAM_PVGD	9.14	0.31
OSTRO Hiriyur	9.08	0.31
GIWEL_BHUJ	8.95	0.30
SALAL HEP	8.67	0.29
MIZORAM	8.63	0.29
JINDAL POWER	8.63	0.29

KAPP 3&4	8.61	0.29
MEGHALAYA	8.57	0.29
INOX_BHUJ	8.47	0.29
RENEW_ROSHNI	8.21	0.28
RAMPUR HEP	8.19	0.28
AZURE43_SLR	8.13	0.27
CHANDIGARH	8.09	0.27
TATA_PVGD	7.92	0.27
AVAADASN_SLR	7.85	0.26
SKRPL	7.22	0.24
ADANI_WIND	7.20	0.24
ESSAR POWER	7.19	0.24
FORTUMI_PVGD	6.94	0.23
ASEJTL_SLR	6.84	0.23
DD&DNH	6.66	0.22
OSTRO	6.56	0.22
RENEW_BHUJ	6.44	0.22
RENEW_BHACHAU	6.42	0.22
ALFANAR_BHUJ	6.39	0.22
THARI_SLR	6.38	0.21
BALCO	6.20	0.21
CLEAN_SLR	6.08	0.20
SEMBCORP	6.06	0.20
RPREL	6.03	0.20
TRIPURA	5.97	0.20
ACME_SLR	5.94	0.20
ALTRA XERGI	5.86	0.20
BEEMPOW	5.74	0.19
APRAAVA	5.68	0.19
NPGC	5.57	0.19
ARS_PVGD	5.55	0.19
ARUNACHAL PRADESH	5.47	0.18
ARINSUM_RUMS	5.28	0.18
MSEPL	5.20	0.17
AVADARJHN_SLR	4.93	0.17
MAHINDRA_RUMS	4.78	0.16
MAITHON POWER LTD	4.65	0.16
AYANA_RP1	4.51	0.15
GIWEL_TCN	4.50	0.15
MSUPL_BHDL2	4.50	0.15
RONGNICHU HEP	4.35	0.15
AVIKIRAN	4.34	0.15
ARERJL_SLR	4.29	0.14
SPRNG_NPKUNTA	4.21	0.14
NSPCL	4.18	0.14
ABC_BHDL2	4.15	0.14
NETCL VALLUR	4.13	0.14
AHEJ2L_SOLAR	4.12	0.14
ACME_RUMS	4.04	0.14
LANKO_AMK	3.99	0.13
AZURE_PVGD	3.97	0.13
RENEW_SR_SLR	3.91	0.13
RENEW_ROSHNI FATEHGARH	3.91	0.13
EDEN_SLR	3.88	0.13
SIMHAPURI	3.86	0.13
AVAADA SUNSHINE	3.85	0.13
NTPC STATIONS-NER	3.78	0.13
SBG_NPK	3.76	0.13
AHEJOL_SLR	3.57	0.12
NTPL	3.54	0.12
AHEJ4L_SOLAR	3.52	0.12
ADANI_S_RJ2	3.50	0.12
SESPL	3.50	0.12

RENEWURJA_SLR	3.43	0.12
NETRA WIND	3.36	0.11
BRBCL,NABINAGAR	3.34	0.11
NAGALAND	3.21	0.11
RENEW_SLR_BKN	3.20	0.11
MB POWER	3.11	0.10
ORANGE_TCN	3.11	0.10
NOKHRA_STPP	3.07	0.10
MSRPL	3.06	0.10
AHEJOL_S_FTG2	2.94	0.10
RENEW_SAAYAN	2.94	0.10
NTPC_ANTP	2.89	0.10
RGPPL	2.86	0.10
SIKKIM	2.82	0.10
SERENTICA RE1 (INFIRM)	2.81	0.09
BARC	2.80	0.09
FRV_ANTP	2.79	0.09
CLEANSR_SLR	2.74	0.09
CGPL	2.73	0.09
RENEWJH_SLR	2.71	0.09
SKS POWER	2.67	0.09
ADY1_PVGD	2.67	0.09
TORRENT SOLARGEN	2.67	0.09
NEA-Bihar	2.63	0.09
AZURE41_SLR	2.60	0.09
RISING_SLR	2.59	0.09
RENEWSW_SLR	2.58	0.09
SPRING_PUGALUR	2.55	0.09
SBG_PVGD	2.54	0.09
TATA_GREEN	2.50	0.08
RENEW_PVGD	2.44	0.08
NAPP	2.43	0.08
ACME_HEERGARH	2.42	0.08
TATA_SLR	2.40	0.08
DB POWER	2.38	0.08
JITPL	2.26	0.08
AZURE_SLR	2.25	0.08
AZURE_MAPLE_SLR	2.21	0.07
RENEWSB	2.14	0.07
ESPL_RADHANESDA	2.13	0.07
NEP	2.12	0.07
SAINJ HEP	2.08	0.07
JHABUA POWER_MP	2.04	0.07
IL&FS	2.03	0.07
AZURE_ANTP	1.99	0.07
DEVKOOT_SLR	1.83	0.06
ADEPT	1.82	0.06
DGPCL Bhutan	1.77	0.06
RANGANADI HEP	1.77	0.06
DCPP	1.75	0.06
TATA_ANTP	1.74	0.06
ONGC PALATANA	1.71	0.06
KSK MAHANADI	1.59	0.05
SINGOLI BHATWARI HEP	1.58	0.05
FORTUM2_PVGD	1.55	0.05
AVAADA1_PVGD	1.44	0.05
POWERICA	1.43	0.05
SORANG HEP	1.42	0.05
ACBIL	1.42	0.05
GSECL P-II	1.36	0.05
AD HYDRO	1.34	0.04
Railways_ER ISTS	1.33	0.04
RAP B	1.31	0.04

GRIAN	1.31	0.04
MEENAKSHI	1.22	0.04
COASTGEN	1.21	0.04
AGEL_PSS 3	1.20	0.04
GMR KAMALANGA	1.16	0.04
RAP C	1.15	0.04
TPSL	1.14	0.04
CHUZACHEN HEP	1.11	0.04
DGEN MEGA POWER	1.08	0.04
AKSP_ANTP	1.05	0.04
FRV_NPK	1.05	0.04
AHSP_ANTP	1.01	0.03
ADHUNIK POWER LTD	1.00	0.03
JORETHANG	0.98	0.03
AKS_PVGD	0.97	0.03
AVAADA2_PVGD	0.96	0.03
GSECL_Radhanesda	0.94	0.03
ABSP_ANTP	0.94	0.03
YARROW_PVGD	0.94	0.03
MTPS II	0.93	0.03
RENEW_SLR	0.91	0.03
RSTPS_FSPP	0.89	0.03
MYTRAH_TCN	0.88	0.03
GIPCL_RADHANESDA	0.87	0.03
ADANI_SLR 4	0.87	0.03
TRN ENERGY	0.85	0.03
RANGIT HEP	0.84	0.03
TPREL_RADHANESDA	0.76	0.03
TASHIDENG HEP	0.70	0.02
BETAM_TCN	0.69	0.02
SRSSFPL	0.67	0.02
SHREE CEMENT	0.66	0.02
SJVN GREEN	0.66	0.02
EMCO	0.64	0.02
PARE HEP	0.56	0.02
LANCO BUDHIL	0.54	0.02
IBEUL	0.49	0.02
BANGLADESH	0.45	0.01
ADANI GREEN	0.41	0.01
AZURE34_SLR	0.40	0.01
DOYANG HEP	0.39	0.01
LOKTAK	0.23	0.01
POWERGRID HVDC	0.20	0.01
DHARIWAL POWER	0.20	0.01
HVDC ALPD	0.19	0.01
TEHRI	0.18	0.01
SB_SLR	0.11	0.004
LANKO KONDAPALLI	0.09	0.003
NFF	0.07	0.003
KOTESHWAR	0.04	0.001
HVDC PUS	0.02	0.001
Total	2970.59	100.00
Volume Exported by top 5 Regional Entities	704.34	23.71

Table-33: VOLUME OF ELECTRICITY OVER DRAWAL/ UNDER INJECTION (IMPORTED) UNDER DSM, JUNE 2024

Name of the Entity	Volume of Over drawal/ Under Injection (MUs)	% of Volume
NTPC STATIONS-NR	184.90	6.83
NTPC STATIONS-WR	139.38	5.15
RAJASTHAN	117.18	4.33
TAMIL NADU	114.46	4.23
NTPC STATIONS-ER	111.01	4.10
NTPC STATIONS-SR	97.95	3.62
AHEJOL_SLR	88.28	3.26
UTTAR PRADESH	73.32	2.71
GUJARAT	66.47	2.45
WEST BENGAL	54.31	2.01
ANDHRA PRADESH	49.75	1.84
BIHAR	47.01	1.74
TELANGANA	46.34	1.71
ODISHA	45.18	1.67
KARNATAKA	44.45	1.64
MAHARASHTRA	40.35	1.49
NLC	39.82	1.47
PUNJAB	38.43	1.42
UTTARAKHAND	36.18	1.34
J & K	31.20	1.15
HARYANA	29.33	1.08
GIWEL_BHUJ	25.58	0.94
AGEMPL_BHUJ	25.49	0.94
KERALA	25.31	0.93
MP	25.22	0.93
SPRING_PUGALUR	23.52	0.87
AMPS Hazira	22.81	0.84
DVC	22.20	0.82
JHARKHAND	21.90	0.81
ADANI_4RE	19.59	0.72
IGSTPS	19.25	0.71
NEPAL(NVVN)	18.80	0.69
CHHATTISGARH	18.61	0.69
NPGC	18.27	0.67
BALCO	18.12	0.67
SBESS	18.05	0.67
AYANA_NPKUNTA	17.51	0.65
ADANI_WIND	17.09	0.63
ASSAM	16.72	0.62
DGPCL_Bhutan	16.64	0.61
INOX_BHUJ	15.55	0.57
IBEUL	15.25	0.56
OSTRO	14.95	0.55
CGPL	14.84	0.55
RENEW_SOJAS	14.64	0.54
BRBCL,NABINAGAR	13.97	0.52
DELHI	13.79	0.51
RENEW_BHUJ	13.35	0.49
RENEW_ROSHNI	12.98	0.48
PARAM_PVGD	12.95	0.48
RENEW_BHACHAU	12.93	0.48
JINDAL STAGE-II	12.77	0.47
ALFANAR_BHUJ	12.73	0.47
KREDL_PVGD	12.73	0.47
SKRPL	12.21	0.45
GRT_JPL	11.72	0.43
NETCL VALLUR	11.60	0.43
JINDAL POWER	11.58	0.43
MB POWER	10.52	0.39
OSTRO Hiriyur	10.01	0.37
FORTUMI_PVGD	9.87	0.36
JSW_RENEW_2	9.76	0.36
HIMACHAL PRADESH	9.76	0.36
CHANDIGARH	9.51	0.35
NEP	9.05	0.33
NHPC STATIONS	8.92	0.33

SHREE CEMENT	8.22	0.30
GOA	8.18	0.30
TRIPURA	8.12	0.30
APRAAVA	7.98	0.29
BEEMPOW	7.62	0.28
NETRA WIND	7.48	0.28
AVAADASN_SLR	7.25	0.27
DB POWER	7.18	0.27
AVIKIRAN	7.10	0.26
ADANI_S_RJ2	7.03	0.26
NTPC STATIONS-NER	6.90	0.25
AZURE43_SLR	6.84	0.25
ESSAR POWER	6.75	0.25
KHURJA STPP	6.68	0.25
DD&DNH	6.59	0.24
MTPS II	6.47	0.24
AVADARJHN_SLR	6.46	0.24
NTPL	6.25	0.23
AVAADA SUNSHINE	6.22	0.23
ARUNACHAL PRADESH	6.21	0.23
SBG_NPK	6.12	0.23
SESPL	6.03	0.22
MSEPL	5.96	0.22
RPREL	5.82	0.21
AZURE_PVGD	5.71	0.21
TATA_PVGD	5.65	0.21
SPRNG_NPKUNTA	5.59	0.21
NTPC_ANTP	5.38	0.20
JHABUA POWER_MP	5.26	0.19
TORRENT SOLARGEN	5.02	0.19
ACME_RUMS	5.00	0.18
MAHINDRA_RUMS	4.96	0.18
AHEJ2L_SOLAR	4.94	0.18
SIKKIM	4.94	0.18
AHEJOL_S_FTG2	4.92	0.18
RENEWSB	4.74	0.18
AGEL_PSS 3	4.44	0.16
ARS_PVGD	4.42	0.16
ARINSUM_RUMS	4.38	0.16
RENEW_ROSHNI FATEHGARH	4.30	0.16
AZURE41_SLR	4.28	0.16
RAPP 7&8	4.19	0.15
AZURE_MAPLE_SLR	4.01	0.15
RENEW_SR_SLR	3.99	0.15
ADYI_PVGD	3.98	0.15
RENEWSW_SLR	3.93	0.14
ALTRA XERGI	3.91	0.14
JITPL	3.83	0.14
NEEPCO STATIONS	3.79	0.14
DEVKOOT_SLR	3.77	0.14
RENEWJH_SLR	3.72	0.14
MAITHON POWER LTD	3.69	0.14
RENEW_SAAYAN	3.69	0.14
ASEJTL_SLR	3.68	0.14
RENEWURJA_SLR	3.66	0.14
ORANGE_TCN	3.63	0.13
AYANA_RPI	3.62	0.13
AVAADA1_PVGD	3.61	0.13
BANGLADESH	3.56	0.13
ACME_SLR	3.56	0.13
NOKHRA STPP	3.55	0.13
COASTGEN	3.45	0.13
GIWEL_TCN	3.43	0.13
THAR1_SLR	3.43	0.13
SERENTICA RE1 (INFIRM)	3.31	0.12
ACBIL	3.27	0.12
ADEPT	3.25	0.12
ACME_HEERGARH	3.25	0.12
ABC_BHDL2	3.25	0.12
EDEN_SLR	3.19	0.12

MEGHALAYA	3.19	0.12
RKM POWER	3.12	0.12
TATA_SLR	3.10	0.11
LANKO_AMK	3.07	0.11
CLEAN_SLR	2.96	0.11
SBG_PVGD	2.95	0.11
SALAL HEP	2.91	0.11
NSPCL	2.86	0.11
KARCHAM WANGTOO	2.86	0.11
RENEW_PVGD	2.85	0.11
RAP B	2.77	0.10
MEENAKSHI	2.71	0.10
RISING_SLR	2.70	0.10
TATA_GREEN	2.69	0.10
GRIAN	2.67	0.10
THERMAL POWERTECH	2.66	0.10
MSRPL	2.64	0.10
DHARIWAL POWER	2.63	0.10
KAPP 3&4	2.63	0.10
LANKO KONDAPALLI	2.59	0.10
MSUPL_BHDL2	2.58	0.10
RENEW_SLR_BKN	2.56	0.09
GMR KAMALANGA	2.52	0.09
PONDICHERRY	2.52	0.09
CLEANSPL_SLR	2.49	0.09
FRV_ANTP	2.38	0.09
NEA-Bihar	2.32	0.09
SASAN UMPP	2.26	0.08
RONGNICHU HEP	2.24	0.08
BBMB	2.21	0.08
POWERICA	2.12	0.08
ARERJL_SLR	2.02	0.07
SEMBCORP	2.00	0.07
ADHUNIK POWER LTD	1.99	0.07
AHEJ4L_SOLAR	1.80	0.07
RAIL	1.80	0.07
ESPL_RADHANESDA	1.80	0.07
NAPP	1.78	0.07
TATA_ANTP	1.76	0.06
CHUZACHEN HEP	1.73	0.06
AZURE_ANTP	1.70	0.06
AZURE_SLR	1.68	0.06
RGPPL	1.67	0.06
FORTUM2_PVGD	1.65	0.06
SIMHAPURI	1.57	0.06
TPSL	1.55	0.06
Railways_ER ISTS	1.54	0.06
DCPP	1.51	0.06
RSTPS_FSPP	1.51	0.06
AD HYDRO	1.49	0.05
IL&FS	1.43	0.05
RANGANADI HEP	1.40	0.05
DGEN MEGA POWER	1.36	0.05
EMCO	1.30	0.05
TPREL_RADHANESDA	1.26	0.05
NJPC	1.18	0.04
SORANG HEP	1.17	0.04
GIPCL_RADHANESDA	1.12	0.04
AHSP_ANTP	1.04	0.04
AVAADA2_PVGD	1.03	0.04
ADANI GREEN	0.98	0.04
SRSSFPL	0.97	0.04
BETAM_TCN	0.96	0.04
ONGC PALATANA	0.96	0.04
ABSP_ANTP	0.95	0.03
AKS_PVGD	0.95	0.03
YARROW_PVGD	0.92	0.03
AKSP_ANTP	0.91	0.03
FRV_NPK	0.90	0.03
MYTRAH_TCN	0.88	0.03

SKS POWER	0.84	0.03
RANGIT HEP	0.82	0.03
JORETHANG	0.81	0.03
SJVN GREEN	0.76	0.03
TASHIDENG HEP	0.73	0.03
RENEW_SLR	0.71	0.03
TRN ENERGY	0.69	0.03
KSK MAHANADI	0.68	0.03
SINGOLI BHATWARI HEP	0.67	0.02
ADANI_SLR 4	0.66	0.02
RAP C	0.66	0.02
SAINJ HEP	0.62	0.02
GSECL P-II	0.60	0.02
MIZORAM	0.53	0.02
NFF	0.42	0.02
NAGALAND	0.41	0.02
JAYPEE NIGRIE	0.24	0.01
LOKTAK	0.23	0.01
RAMPUR HEP	0.23	0.01
GSECL_Radhnesda	0.21	0.01
DOYANG HEP	0.21	0.01
PARE HEP	0.19	0.01
HVDC PUS	0.19	0.01
TEHRI	0.16	0.01
MANIPUR	0.16	0.01
LANCO BUDHIL	0.15	0.01
POWERGRID HVDC	0.12	0.004
AZURE34_SLR	0.12	0.004
KOTESHWAR	0.07	0.003
HVDC ALPD	0.03	0.001
TOTAL	2708.39	100.00
Volume Imported by top 5 Regional Entities	666.93	24.62

Table-34: VOLUME AND PRICE OF RENEWABLE ENERGY CERTIFICATES (RECs) TRANSACTED THROUGH POWER EXCHANGES AND THROUGH TRADERS (BILATERAL), JUNE 2024

Sr. No	Details of REC Transactions	Through Power Exchange			Bilateral through Traders
		IEX	PXIL	HPX	
1	Volume of Buy Bid	439256	250229	0.00	-
2	Volume of Sell Bid	4522330	3892836	2778457	-
3	Ratio of Buy Bid to Sell Bid Volume	0.10	0.06	-	-
4	Traded Volume (MWh)	439256	250229	-	5174
5	Weighted Average Price (₹/MWh)	142	147	-	168

Source: Power Exchanges & Grid-India REC Report

Note: 1 REC = 1 MWh

Under the CERC REC Regulations 2022, the categorization of RECs has been dispensed with and exchange of RECs through trading licensees has also been allowed

Table-35(a): VOLUME AND PRICE OF CROSS BORDER TRADE THROUGH DAY AHEAD MARKET AT IEX, JUNE 2024

Sr. No.	Neighbouring Country	Volume (MU)			Weighted Average Price (₹/kWh)	
		Sale	Purchase	Net*	Sale	Purchase
1	Nepal	100.82	37.06	-63.76	4.85	3.21
2	Bhutan	14.49	0.00	-14.49	6.03	-
	Total	115.31	37.06	-78.25	-	-

Source: IEX

* Net indicates difference of volume purchased and sold by the respective neighbouring country

Note: No Cross Border transactions were recorded in DAM at PXIL and HPX

Table-35(b): VOLUME AND PRICE OF CROSS BORDER TRADE THROUGH REAL TIME MARKET AT IEX, JUNE 2024

Sr. No.	Neighbouring Country	Volume (MU)			Weighted Average Price (₹/kWh)	
		Sale	Purchase	Net*	Sale	Purchase
1	Nepal	26.90	23.20	-3.70	3.65	3.71
2	Bhutan	5.02	0.00	-5.02	5.46	-
	Total	31.92	23.20	-8.72	-	-

Source: IEX

* Net indicates difference of volume purchased and sold by the respective neighbouring country

Note: No Cross Border transactions were recorded in RTM at PXIL and HPX



Economics Division
Central Electricity Regulatory Commission
6th, 7th & 8th Floors, Tower B, World Trade Centre,
Nauroji Nagar, New Delhi- 110029